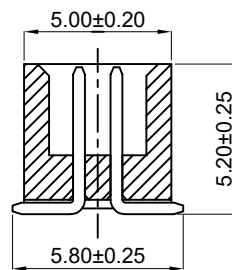
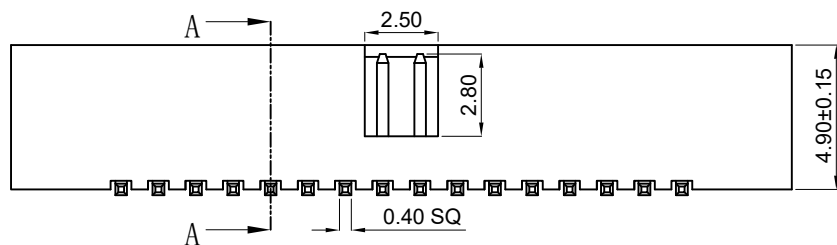
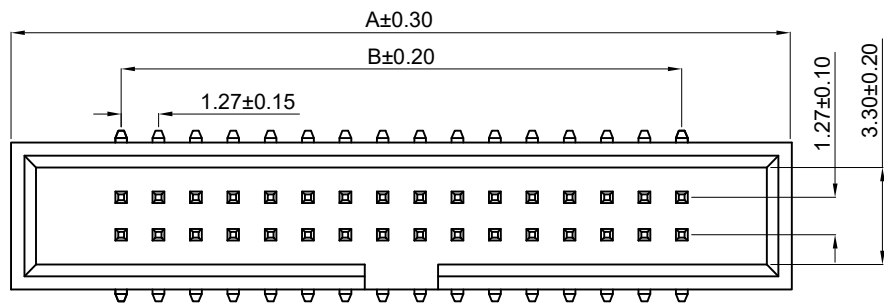
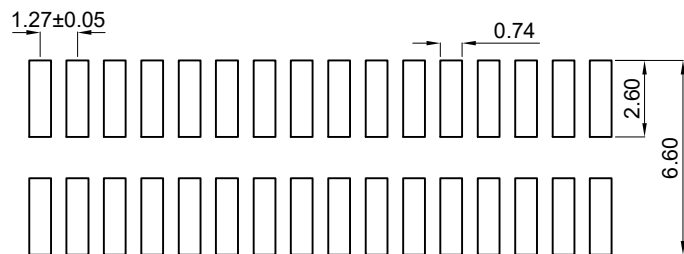


RoHS



SECTION A-A



Recommended PCB Board Layout

SPECIFICATION:

- Current Rating:1A AC/DC
 - Insulation Resistance: 1000MΩ Min
 - Contact resistance:30mΩ(Max).
 - Withstanding Voltage: 500VAC(1Min)
 - Operation Temperature: -40°C to +105°C
- Material:**
- Insulator (Housing): PA6T + 30%Glass Fiber Polyester (UL94-V0)
 - Contact Material:Brass
 - Contact Plated : AU or Sn Over Ni

Ordering Information

BH127H 490 SMT - 2xx G XX A 3 302

Insulator height 490=4.90mm PTYE SMT=PATCH No. of Pins 210=2x10PIN Plating G=Gold Plated S= Tin Plated Color BK=black GR=Gray Material A=PA6T Package 0=PE Bag 1=Tape&Reel 2=Tube 3=Tray

Dimensions		PIN
A	B	
12.55	5.08	2x5
15.09	7.62	2x7
16.36	8.89	2x8
18.90	11.43	2x10
22.71	15.24	2x13
25.25	17.78	2x15
27.79	20.32	2x17
31.70	24.13	2x20
38.05	30.48	2x25
44.30	36.83	2x30

SCONDAR ELECTRONIC LIMITE
ENGINEER YAO APPROVED

OPERATION	DRAW	YaoQ	2016.06.15	SCALE	—
X.X ±0.30	DESIGN	Lyao	2016.06.16	UNIT	mm
X.XX ±0.20	CHECK	Lisa	2016.06.18	SIZE	A4
X.XXX ±0.10	APPROVE			SHEET	1/1
Angle ±3°				PROJ.	⌀
DIM TOL				TITLE:	



SCONDAR ELECTRONIC LIMITED

REV	DATE	MODIFICATION DESCRIPTION	CHANGE	APPROVE
AO	2016.06.18	NEW	—	—

Part No. BH127H490SMT-2xxGXXA1302
TITLE: BH1.27 H=4.90 2xxPin Gold PA6T SMT Box Header