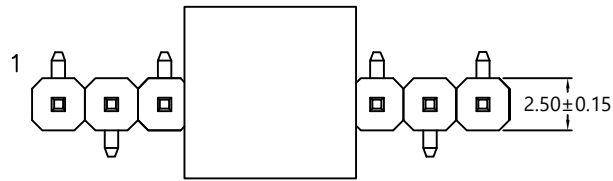
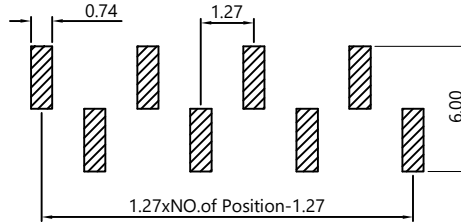


RoHS

受控



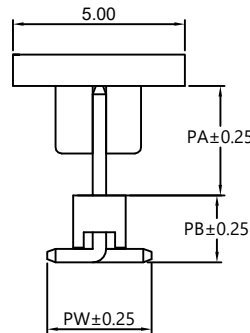
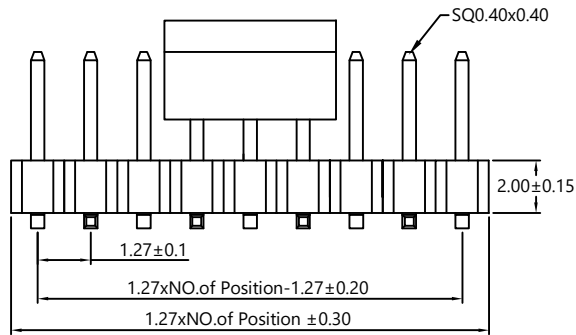
TYPE A



P.C.B Layout  
TYPE A

**SPECIFICATION:**

- Current Rating:3Amps
  - Insulation Resistance: 1000MΩ Min
  - Contact Resistance:20mΩ Max
  - Withstanding Voltage: 550VAC(1Min)
  - Max Processing Temp:230°-260° for 10s
  - Operation Temperature: -25°C to +105°C
- Material:**
- Insulator (Housing):PA6T (UL94V-0)
  - Contacts:Brass
  - Contact Plated:Gold Plated



**Ordering Information**

PH127 H 200 SMT -1xx G A 1 301 A

Insulator height 200=2.00mm  
 No.of Pins 106=1x6Pin  
 Plating G=Gold Plated  
 Material A=PA6T  
 Package 1=Tape&Reel  
 PCB layout type A

Dimension antitheses list				
ITEM	PA	PB	PW	L
Alternate	4.00	2.40	5.00	8.50

SCONDAE ELECTRONIC LTD  
ENGINEER LIU APPROVED

REV	DATE	MODIFICATION DESCRIPTION	CHANGE	APPROVE	OPERATION	DRAW	YaoQ	2017.06.12	SCALE	-	
					X.X	±0.35			UNIT	mm	
					X.XX	±0.25			SIZE	A4	
AO		NEW			X.XXX	±0.15			SHEET	1/1	
					Angle	± 3'			PART NO.	PH127H200SMT-1xxGA1301A	
					DIM	TOL			PROJ.	⊕	
									TITLE:	PH127 SMT H2.00 PA4.0 PW5.0 1XXP Gold flash PA6T PCB Layout TYPE A	