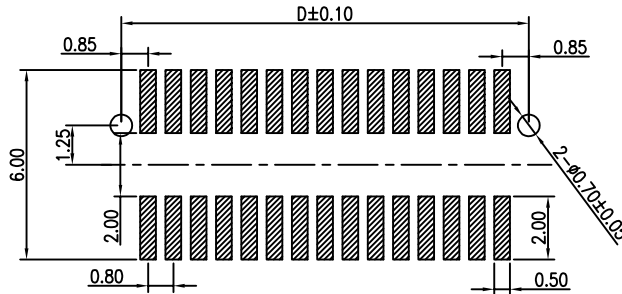
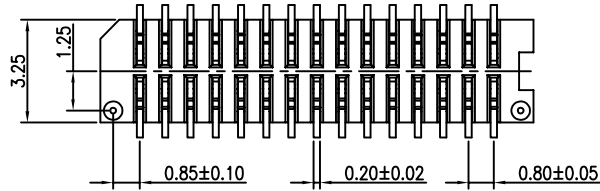
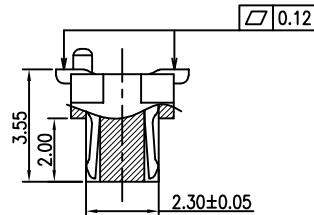
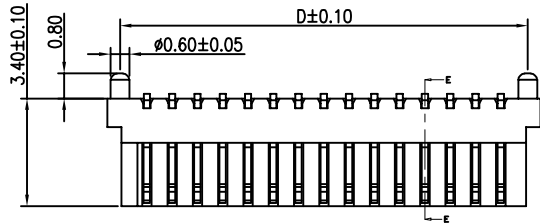


RoHS



RECOMMENDED PCB LAYOUT



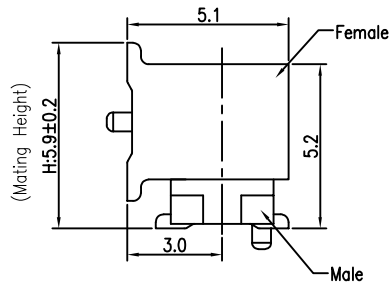
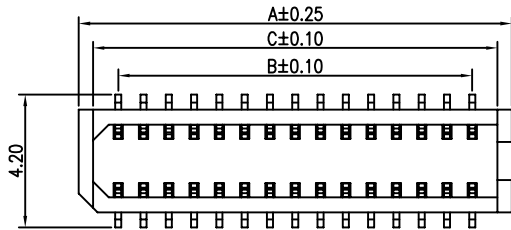
SECTION: E-E

SPECIFICATIONS

- Current Rating:0.3A
- Voltage Rating:30V AC/DC
- Contact Resistance:100mΩ Max
- Insulation Resistance:50MΩ Min
- Withstanding Voltage:100V AC/Minute
- Temperature Range : -35°C ~ +85°C
- Housing: LCP (UL94V-0) Beige
- Terminal:Brass
- Plating: Gold Plated
- Overall 50~100μ" Nickel Under Plated

Ordering Information

80BTB H590 MVSF - 2xx G F 1 BE 118  
 Mated High H590=5.90mm Model MVS=Male WV No of Pins 40=2X20P Plating S=Tin Plated F=Gold Flash/Tin G=Gold Material F=LCP Package 0=PE Bag 1=Tap&Reel 2=Tube 3=Tray Color BE=Beige



Combination Chart

PIN	Dimensions				PIN	Dimensions			
	A	B	C	D		A	B	C	D
10(2*5)	5.78	3.20	4.85	4.90	42(2*21)	18.58	16.00	17.65	17.70
12(2*6)	6.58	4.00	5.65	5.70	44(2*22)	19.38	16.80	18.45	18.50
14(2*7)	7.38	4.80	6.45	6.50	46(2*23)	20.18	17.60	19.25	19.30
16(2*8)	8.18	5.60	7.25	7.30	48(2*24)	20.98	18.40	20.05	20.10
18(2*9)	8.98	6.40	8.05	8.10	50(2*25)	21.78	19.20	20.85	20.90
20(2*10)	9.78	7.20	8.85	8.90	52(2*26)	22.58	20.00	21.65	21.70
22(2*11)	10.58	8.00	9.65	9.70	54(2*27)	23.38	20.80	22.45	22.50
24(2*12)	11.38	8.80	10.45	10.50	56(2*28)	24.18	21.60	23.25	23.30
26(2*13)	12.18	9.60	11.25	11.30	58(2*29)	24.98	22.40	24.05	24.10
28(2*14)	12.98	10.40	12.05	12.10	60(2*30)	25.78	23.20	24.85	24.90
30(2*15)	13.78	11.20	12.85	12.90	62(2*31)	26.58	24.00	25.65	25.70
32(2*16)	14.58	12.00	13.65	13.70	64(2*32)	27.38	24.80	26.45	26.50
34(2*17)	15.38	12.80	14.45	14.50	66(2*33)	28.18	25.60	27.25	27.30
36(2*18)	16.18	13.60	15.25	15.30	68(2*34)	28.98	26.40	28.05	28.10
38(2*19)	16.98	14.40	16.05	16.10	70(2*35)	29.78	27.20	28.85	28.90
40(2*20)	17.78	15.20	16.85	16.90					

SCONDAR ELECTRONIC, LTD  
 ENGINEER 20241008

OPERATION	DRAW	Xiong	2017.11.02	SCALE	-
X.X ±0.35	DESIGN			UNIT	mm
X.XX ±0.25	CHECK	Lisa	2017.11.02	SIZE	A4
X.XXX ±0.15	APPROVE			SHEET	1/1
Angle ± 3'				PROJ.	⌀
DIM TOL				TITLE:	

SCONDAR  
 SCONDAR ELECTRONIC LIMITED  
 PART NO. 80BTBH590MVSF-2xxGF1BE118  
 TITLE: 0.8mm Board to board H=5.9 SMT 180° LCP Beige Male Socket Gold Plated 2xxPin With-pillar CAP Reel

REV	DATE	MODIFICATION DESCRIPTION	CHANGE	APPROVE
A0	2017.11.02	NEW		