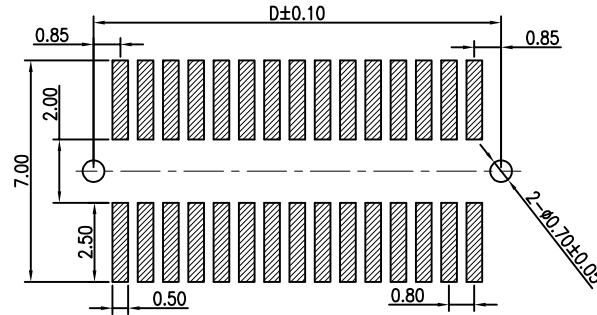
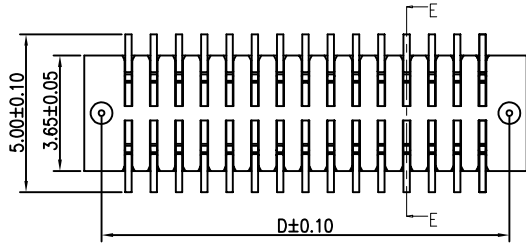


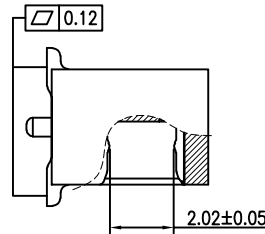
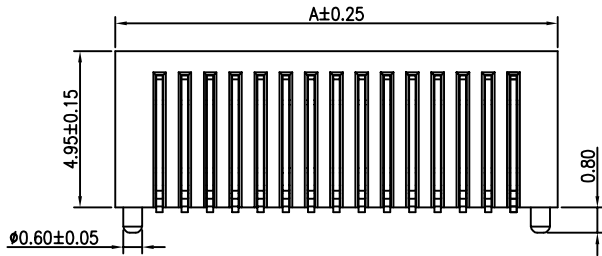
RoHS

SPECIFICATIONS

- Current Rating:0.3A
- Voltage Rating:30V AC/DC
- Contact Resistance:100mΩ Max
- Insulation Resistance:50MΩ Min
- Withstanding Voltage:100V AC/Minute
- Temperature Range : -35°C ~ +85°C
- Housing: LCP (UL94V-0) Black
- Terminal:Phosphor Bronze
- Plating: Gold Plated
- Overall 50~100μ" Nickel Under Plated



RECOMMENDED PCB LAYOUT

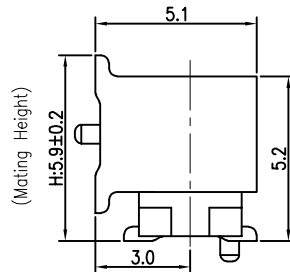
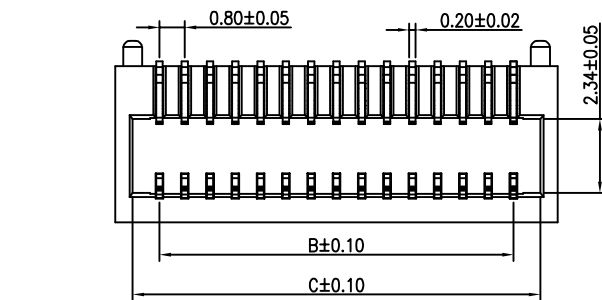


SECTION: E-E

Ordering Information

80BTB H590 FRSF - 2xx G F 1 BE 118

Material High H590=5.90mm Model FRS=Female WR No.of Pins 40=2X20P Plating S=Tin Plated F=Gold Flash+Tin G=Gold Material F=LCP Package 0=PE Bag 1=Tape&Reel 2=Tube 3=Tray Color BE=Beige



Combination Chart

PIN	Dimensions				PIN	Dimensions			
	A	B	C	D		A	B	C	D
10(2*5)	6.00	3.20	4.88	4.90	42(2*21)	18.80	16.00	17.68	17.70
12(2*6)	6.80	4.00	5.68	5.70	44(2*22)	19.60	16.80	18.48	18.50
14(2*7)	7.60	4.80	6.48	6.50	46(2*23)	20.40	17.60	19.28	19.30
16(2*8)	8.40	5.60	7.28	7.30	48(2*24)	21.20	18.40	20.08	20.10
18(2*9)	9.20	6.40	8.08	8.10	50(2*25)	22.00	19.20	20.88	20.90
20(2*10)	10.00	7.20	8.88	8.90	52(2*26)	22.80	20.00	21.68	21.70
22(2*11)	10.80	8.00	9.68	9.70	54(2*27)	23.60	20.80	22.48	22.50
24(2*12)	11.60	8.80	10.48	10.50	56(2*28)	24.40	21.60	23.28	23.30
26(2*13)	12.40	9.60	11.28	11.30	58(2*29)	25.20	22.40	24.08	24.10
28(2*14)	13.20	10.40	12.08	12.10	60(2*30)	26.00	23.20	24.88	24.90
30(2*15)	14.00	11.20	12.88	12.90	62(2*31)	26.80	24.00	25.68	25.70
32(2*16)	14.80	12.00	13.68	13.70	64(2*32)	27.60	24.80	26.48	26.50
34(2*17)	15.60	12.80	14.48	14.50	66(2*33)	28.40	25.60	27.28	27.30
36(2*18)	16.40	13.60	15.28	15.30	68(2*34)	29.20	26.40	28.08	28.10
38(2*19)	17.20	14.40	16.08	16.10	70(2*35)	30.00	27.20	28.88	28.90
40(2*20)	18.00	15.20	16.88	16.90					

		<div style="border: 1px solid red; padding: 2px; color: red; text-align: center;"> SCCONDAR ELECTRONIC, LTD ENGINEER 20241008 </div>		OPERATION		DRAW	Xiong	2017.11.02	SCALE	-	 SCONDAR ELECTRONIC LIMITED	
				X.X	±0.35				UNIT	mm		
				X.XX	±0.25	DESIGN		SIZE	A4			
A0	2017.11.02			NEW		X.XXX	±0.15	CHECK	Lisa	2017.11.02		SHEET
REV	DATE	MODIFICATION DESCRIPTION		CHANGE	APPROVE	APPROVE		PROJ.		TITLE:	0.8mm Board to board H=5.9 SMT 90° LCP Beige Male Socket Gold Plated 2xxPin With-pillar CAP Reel	