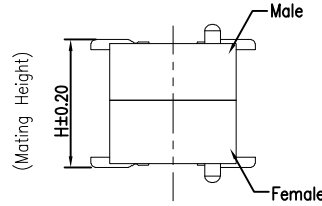
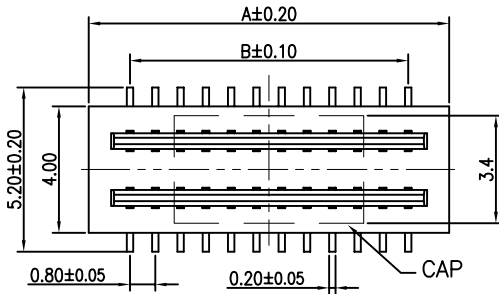
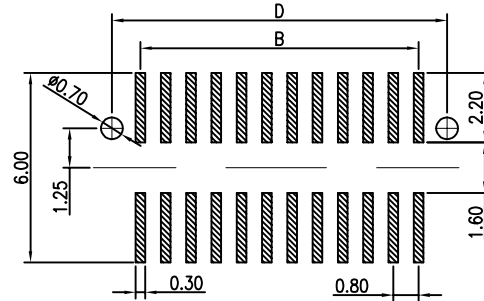
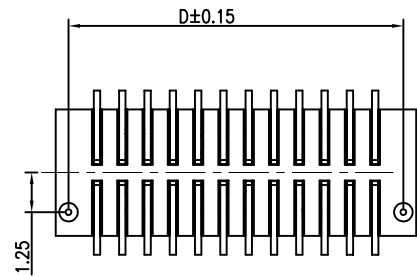
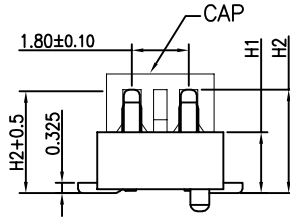
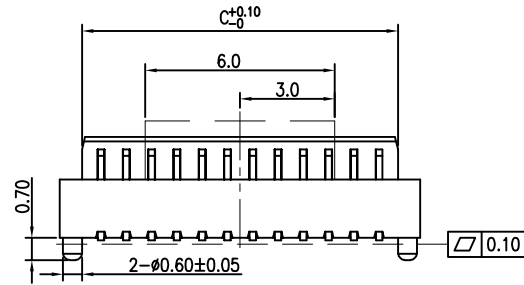


RoHS



Combination Chart



RECOMMENDED PCB LAYOUT

SPECIFICATIONS

- Current Rating:0.3A
- Voltage Rating:30V AC/DC
- Contact Resistance:100mΩ Max
- Insulation Resistance:50MΩ Min
- Withstanding Voltage:100V AC/Minute
- Temperature Range : -35°C ~ +85°C
- Housing: LCP (UL94V-0) Black
- Terminal:Phosphor Bronze
- Plating: Gold Plated
- Overall 50~100μ" Nickel Under Plated

Ordering Information

80BTB DHxx MVSF - 2xx G F 1 BK 118

Mated High H300=3.00mm H500=5.00mm H350=3.50mm H550=5.50mm H400=4.00mm H600=6.00mm H450=4.50mm H650=6.50mm

Model MVS=Male VV

No.of Pins 40=2X20P

Plating S=Tin Plated F=Gold Flash/Tin G=Gold

Material F=LCP

Package 0=PE Bag 1=Tap&Reel 2=Tube 3=Tray

Color BK=Black

Mating Height(H)	3.0	3.5	4.0	4.5	5.0	5.5	6.0	6.5
Male(H1)	0.925	1.425	1.925	1.025	1.525	2.025	2.525	3.025
Female(H2)		2.125				3.525		
Male(H2)	2.275	2.775	3.275	2.925	3.425	3.925	4.425	4.925

PIN	Dimensions				PIN	Dimensions			
	A	B	C	D		A	B	C	D
8(2*4)	5.00	2.40	3.60	4.20	44(2*22)	19.40	16.80	18.00	18.60
10(2*5)	5.80	3.20	4.40	5.00	46(2*23)	20.20	17.60	18.80	19.40
12(2*6)	6.60	4.00	5.20	5.80	48(2*24)	21.00	18.40	19.60	20.20
14(2*7)	7.40	4.80	6.00	6.60	50(2*25)	21.80	19.20	20.40	21.00
16(2*8)	8.20	5.60	6.80	7.40	52(2*26)	22.60	20.00	21.20	21.80
18(2*9)	9.00	6.40	7.60	8.20	54(2*27)	23.40	20.80	22.00	22.60
20(2*10)	9.80	7.20	8.40	9.00	56(2*28)	24.20	21.60	22.80	23.40
22(2*11)	10.60	8.00	9.20	9.80	58(2*29)	25.00	22.40	23.60	24.20
24(2*12)	11.40	8.80	10.00	10.60	60(2*30)	25.80	23.20	24.40	25.00
26(2*13)	12.20	9.60	10.80	11.40	62(2*31)	26.60	24.00	25.20	25.80
28(2*14)	13.00	10.40	11.60	12.20	64(2*32)	27.40	24.80	26.00	26.60
30(2*15)	13.80	11.20	12.40	13.00	66(2*33)	28.20	25.60	26.80	27.40
32(2*16)	14.60	12.00	13.20	13.80	68(2*34)	29.00	26.40	27.60	28.20
34(2*17)	15.40	12.80	14.00	14.60	70(2*35)	29.80	27.20	28.40	29.00
36(2*18)	16.20	13.60	14.80	15.40	72(2*36)	30.60	28.00	29.20	29.80
38(2*19)	17.00	14.40	15.60	16.20	74(2*37)	31.40	28.80	30.00	30.60
40(2*20)	17.80	15.20	16.40	17.00	76(2*38)	32.20	29.60	30.80	31.40
42(2*21)	18.60	16.00	17.20	17.80					

SCONDAR ELECTRONIC, LTD
ENGINEER 20241008

OPERATION							
X.X	±0.35	DRAW	Xiong	2017.11.02	SCALE	-	
X.XX	±0.25	DESIGN			UNIT	mm	
X.XXX	±0.15	CHECK	Lisa	2017.11.02	SIZE	A4	
Angle	± 3'	APPROVE			SHEET	1/1	
DIM	TOL				PROJ.		



SCONDAR ELECTRONIC LIMITED

A0	2017.11.02	NEW							
REV	DATE	MODIFICATION DESCRIPTION	CHANGE	APPROVE					
					PART NO.		80BTBDHxxxMVSF-2xxGF1BK118		
					TITLE:		0.8mm Board to board H=xxx Double card slot SMT 180° LCP Black Male Socket Gold Plated 2xxPin With-pillar CAP Reel		