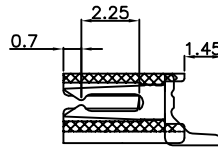
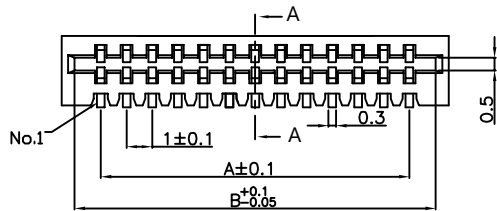
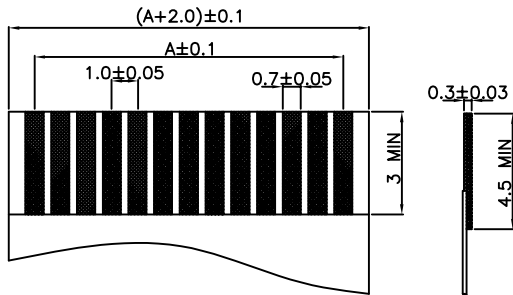
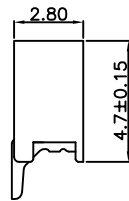
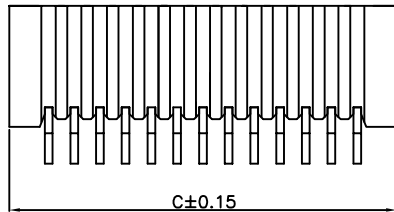


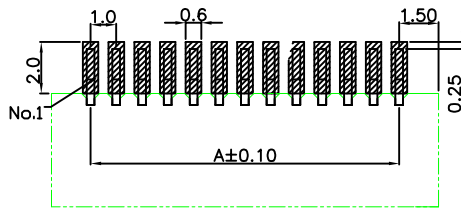
RoHS



SECTION A-A



APPLICABLE FPC



RECOMMENDED PCB LAYOUT

SPECIFICATION:

- Rated Current: 1.0A
- Rated voltage: 50V AC
- Insulation Resistance: 500MΩ Min
- Withstand voltage: 500VAC (1Min)
- Contact resistance: 30mΩ (Max)
- Working temperature: -25°C to +85°C

Material:

- Housing: PA9T (UL94V-0) Black
- Contact: Phosphor Bronze
- Plating: Surface nickel plating, followed by Tin plating

Ordering Information

FPC 10 28 B0 - xxP RS D S 1 101

Pitch 10=1.0mm
 Height H=2.8mm
 Model
 No. of Pins See Table
 Type SMT WR
 Foot Position D=Double grafting
 Coating G=Gold S=Tin
 Package 1=Tape&Reel 2=Tube

PIN	Dim A	Dim B	Dim C	PIN	Dim A	Dim B	Dim C
4	3.00	5.06	6.00	23	22.00	24.06	25.00
5	4.00	6.06	7.00	24	23.00	25.06	26.00
6	5.00	7.06	8.00	25	24.00	26.06	27.00
7	6.00	8.06	9.00	26	25.00	27.06	28.00
8	7.00	9.06	10.00	27	26.00	28.06	29.00
9	8.00	10.06	11.00	28	27.00	29.06	30.00
10	9.00	11.06	12.00	29	28.00	30.06	31.00
11	10.00	12.06	13.00	30	29.00	31.06	32.00
12	11.00	13.06	14.00	31	30.00	32.06	33.00
13	12.00	14.06	15.00	32	31.00	33.06	34.00
14	13.00	15.06	16.00	33	32.00	34.06	35.00
15	14.00	16.06	17.00	34	33.00	35.06	36.00
16	15.00	17.06	18.00	35	34.00	36.06	37.00
17	16.00	18.06	19.00	36	35.00	37.06	38.00
18	17.00	19.06	20.00	37	36.00	38.06	39.00
19	18.00	20.06	21.00	38	37.00	39.06	40.00
20	19.00	21.06	22.00	39	38.00	40.06	41.00
21	20.00	22.06	23.00	40	39.00	41.06	42.00
22	21.00	23.06	24.00				

SCONDAR ELECTRONIC LTD
ENGINEER LIU APPROVED

OPERATION	DRAW	YAO	2021.07.03
X.X ±0.35	DESIGN	Xiong	2021.07.04
X.XX ±0.25			
X.XXX ±0.15	CHECK	Lisa	2021.07.08
Angle ± 3'			
DIM TOL	APPROVE		

SCALE: -

UNIT: mm

SIZE: A4

SHEET: 1/1

PROJ. TITLE:

SCONDAR ELECTRONIC LIMITED

PART NO. FPC1028B0-XXPRSDS1101

FPC 1.0mm H=2.8 'B' Model NO. LD SMT RS PAST VO Black Double grafting xP Contact Tin plating Reel Package

AO	2021.07.08	NEW		
REV	DATE	MODIFICATION DESCRIPTION	CHANGE	APPROVE