

RoHS

SPECIFICATION:

- Rated Current: 0.5A
- Rated voltage: 50V AC
- Insulation Resistance: 500MΩ Min
- Withstand voltage: 500VAC (1Min)
- Contact resistance: 30mΩ (Max)
- Working temperature: -25°C to +85°C

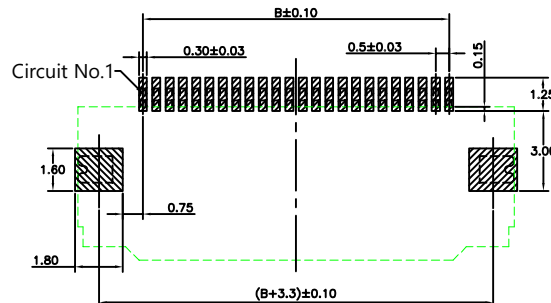
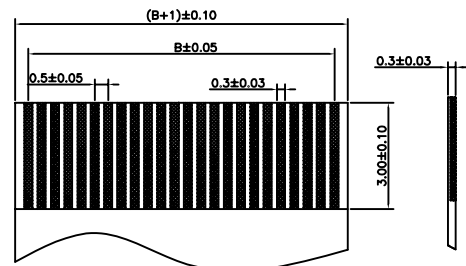
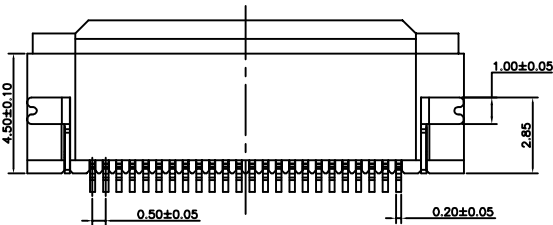
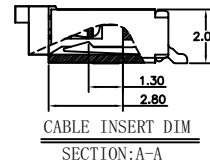
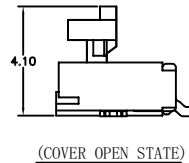
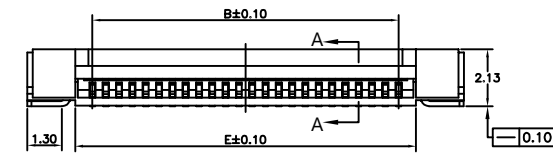
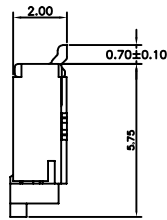
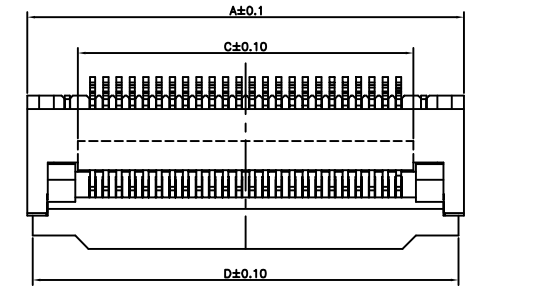
Material:

- Housing: LCP (UL94V-0) Beige
- Actuator: LCP (UL94V-0) Black
- Fitting Nail: Brass
- Plating: Surface nickel plating, followed by Tin plating
- Contact: Brass
- Plating: Surface nickel plating, followed by Tin plating

Ordering Information

FPC 05 20 F2 - xxP RS X S 1 118

Pitch 05=0.5mm    Height H=2.0mm    Model    No. of Pins See Table    Type SMT WR    Foot Position X=Bottom contact S=Top contact    Coating G=Gold S=Tin    Package 1=Tap&Reel 2=Tube



PIN	Dimensions					PIN	Dimensions					PIN	Dimensions				
	Dim A	Dim B	Dim C	Dim D	Dim E		Dim A	Dim B	Dim C	Dim D	Dim E		Dim A	Dim B	Dim C	Dim D	Dim E
4	6.40	1.50	2.60	6.00	2.80	25	16.90	12.00	13.10	16.50	13.30	46	27.40	22.50	23.60	27.00	23.80
5	6.90	2.00	3.10	6.50	3.30	26	17.40	12.50	13.60	17.00	13.80	47	27.90	23.00	24.10	27.50	24.30
6	7.40	2.50	3.60	7.00	3.80	27	17.90	13.00	14.10	17.50	14.30	48	28.40	23.50	24.60	28.00	24.80
7	7.90	3.00	4.10	7.50	4.30	28	18.40	13.50	14.60	18.00	14.80	49	28.90	24.00	25.10	28.50	25.30
8	8.40	3.50	4.60	8.00	4.80	29	18.90	14.00	15.10	18.50	15.30	50	29.40	24.50	25.60	29.00	25.80
9	8.90	4.00	5.10	8.50	5.30	30	19.40	14.50	15.60	19.00	15.80	51	29.90	25.00	26.10	29.50	26.30
10	9.40	4.50	5.60	9.00	5.60	31	19.90	15.00	16.10	19.50	16.30	52	30.40	25.50	26.60	30.00	26.80
11	9.90	5.00	6.10	9.50	6.30	32	20.40	15.50	16.60	20.00	16.80	53	30.90	26.00	27.10	30.50	27.30
12	10.40	5.50	6.60	10.00	6.60	33	20.90	16.00	17.10	20.50	17.30	54	31.40	26.50	27.60	31.00	27.80
13	10.90	6.00	7.10	10.50	7.30	34	21.40	16.50	17.60	21.00	17.80	55	31.90	27.00	28.10	31.50	28.30
14	11.40	6.50	7.60	11.00	7.80	35	21.90	17.00	18.10	21.50	18.30	56	32.40	27.50	28.60	32.00	28.80
15	11.90	7.00	8.10	11.50	8.30	36	22.40	17.50	18.60	22.00	18.80	57	32.90	28.00	29.10	32.50	29.30
16	12.40	7.50	8.60	12.00	8.60	37	22.90	18.00	19.10	22.50	19.30	58	33.40	28.50	29.60	33.00	29.80
17	12.90	8.00	9.10	12.50	9.30	38	23.40	18.50	19.60	23.00	19.80	59	33.90	29.00	30.10	33.50	30.30
18	13.40	8.50	9.60	13.00	9.80	39	23.90	19.00	20.10	23.50	20.30	60	34.40	29.50	30.60	34.00	30.80
19	13.90	9.00	10.10	13.50	10.30	40	24.40	19.50	20.60	24.00	20.80	61	34.90	30.00	31.10	34.50	31.30
20	14.40	9.50	10.60	14.00	10.60	41	24.90	20.00	21.10	24.50	21.30	62	35.40	30.50	31.60	35.00	31.80
21	14.90	10.00	11.10	14.50	11.30	42	25.40	20.50	21.60	25.00	21.80	63	35.90	31.00	32.10	35.50	32.30
22	15.40	10.50	11.60	15.00	11.80	43	25.90	21.00	22.10	25.50	22.30	64	36.40	31.50	32.60	36.00	32.80
23	15.90	11.00	12.10	15.50	12.30	44	26.40	21.50	22.60	26.00	22.80	65	36.90	32.00	33.10	36.50	33.30
24	16.40	11.50	12.60	16.00	12.80	45	26.90	22.00	23.10	26.50	23.30						

SCONDA ELECTRONIC LTD  
ENGINEER LTD APPROVED

OPERATION	DRAW	YAO	2021.06.06
X.X ±0.35	DESIGN	LYAO	2021.06.08
X.XX ±0.25			
X.XXX ±0.15	CHECK	Lisa	2021.06.08
Angle ± 3'			
DIM TOL	APPROVE		

SCALE: -

UNIT: mm

SIZE: A4

SHEET: 1/1

PROJ. TITLE:

SCONDA ELECTRONIC LIMITED

PART NO. FPC0520F2-xxPRSXS1118

FPC 0.5mm H=2.0 "F" Model number Flip front SMT RS LCP V0 Beige Bottom contact xxP Contact TIN plating Reel Package

REV	DATE	MODIFICATION DESCRIPTION	CHANGE	APPROVE
AO	2021.06.12	NEW		