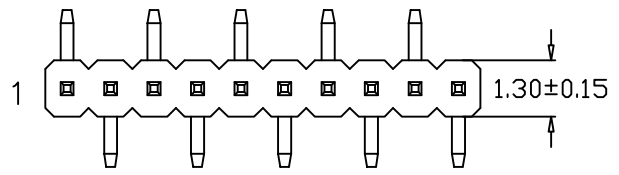
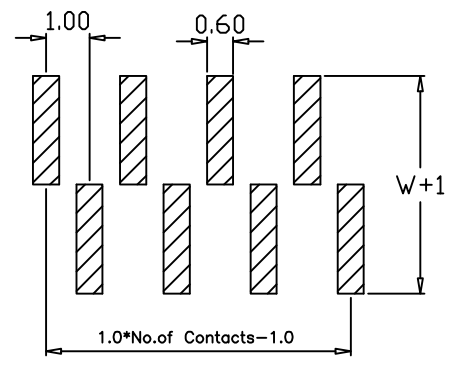


RoHS

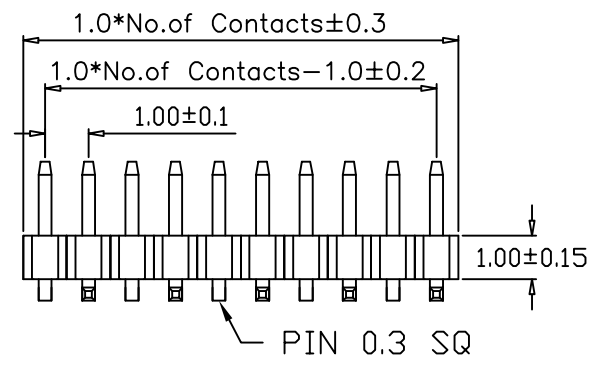
受控



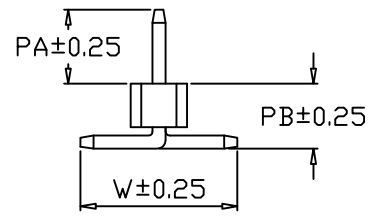
TYPE A



TYPE A PCB LAYOUT



PIN 0.3 SQ



SPECIFICATION:

- Current Rating: 1A AC/DC
- Contact resistance: 20mΩ(Max).
- Insulation Resistance: 1000MΩ Min
- Withstanding Voltage: 500VAC(1Min)
- Operation Temperature: -40°C to +105°C
- Max Processing Temp: 230°C-260°C for 30°C-60°C seconds
- Material:
- Insulator : Glass filled PA6T (UL94V-0), black
- Contacts: Brass

Ordering Information

PH100H100 SMT- 1xx G A 1 301 A

Insulator height 100=1.00mm  
 No. of Pins 20=20PIN  
 Plating G=Gold Plated T=Tin Plated G2=Gold 2u" G10=Gold 10u"  
 Material A=PA6T  
 Package 0=PE Bag 1=Tube&Reel 2=Tube 3=Tray  
 PCB layout type A

Dimension antitheses list				
ITEM	PA	PB	W	L
Alternate	2.00	1.50	3.60	5.00

SCONDAR ELECTRONIC LTD  
ENGINEER LIU APPROVED

AO	2021.7.20	NEW			OPERATION	DRAW	Yang	2017.3.16	SCALE	-	 SCONDAR ELECTRONIC LIMITED	
					X.X	±0.35			UNIT	mm		
					X.XX	±0.25			SIZE	A4		
					X.XXX	±0.15			SHEET	1/1		
REV	DATE	MODIFICATION DESCRIPTION	CHANGE	APPROVE	Angle	± 3'			PROJ.	⊕	PART NO.	PH100H100SMT-1xxGA1301A
					DIM	TOL					TITLE:	PH1.0 SMT H1.0 PA2.0 PB1.5 W3.6 L5.0 Gold flash PA6T 1XXP Pin header