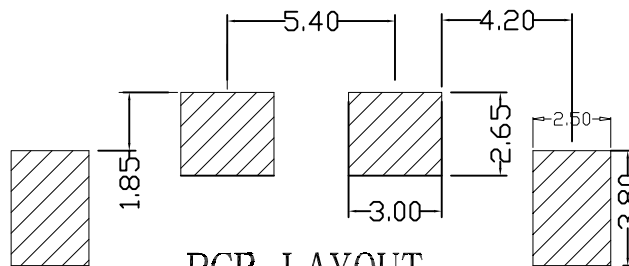
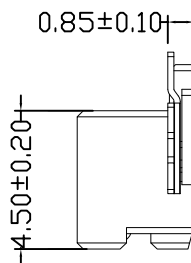
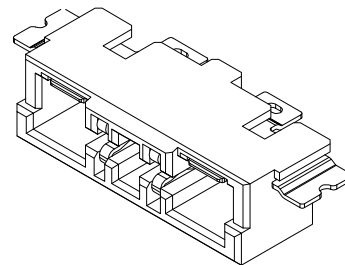
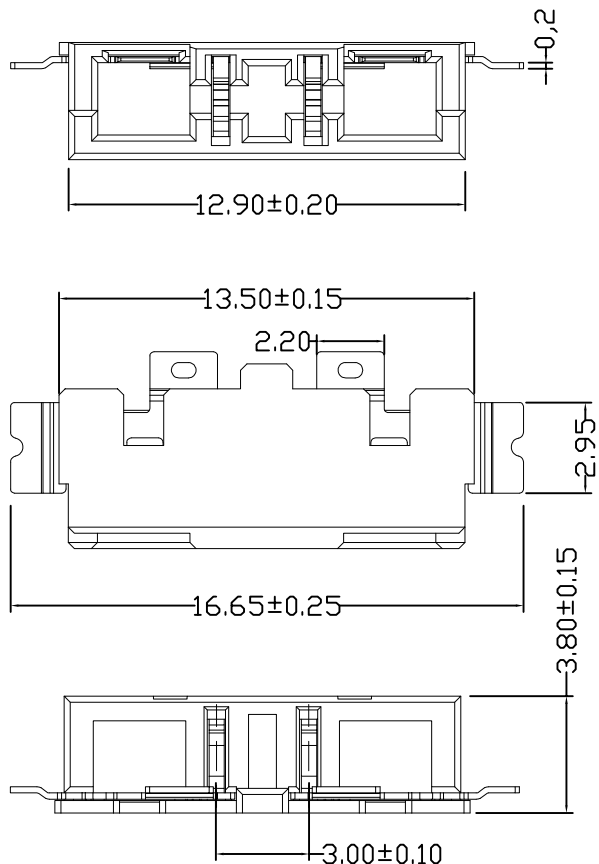


1 2 3 4 5 6 7 8 9 10

A
B
C
D
E
F
G



PCB LAYOUT

SPECIFICATIONS

Voltage rating: 150V AC, DC
 Current rating: 1A, AC, DC
 Withstanding Voltage: 1000V AC/minute
 Insulation resistance: 1000MΩ min
 Temperature range: -25°C - +85
 Contact resistance: 40mΩ max

Part No: 300BTB
 Material: LCP, UL94V-0
 Contact: Phosphor bronze, Tin plated
 Q' TY: 1,000PCS/Reel

Ordering Information

300BTB-FWR-02 S F 1 BK 182

F=Female
 M=Male
 Plating
 S=Tin Plated
 Material
 F=LCP
 Package
 1=Tape&Reel
 Color
 BK=Black

SCONDAR ELECTRONIC LIMITED
 ENGINEER LIU APPROVED

						OPERATION	DRAW	Zhong	2020.11.05	SCALE		森康达电子有限公司 SCONDAR ELECTRONIC LIMITED	
						~ 10 ±0.15	DESIGN			UNIT	mm		
						20 ~ 30 ±0.30	CHECK	Micky	2020.11.05	SIZE	A4	PART NO.	300BTB-FWR-02SF1BK182
0	05/12/27		NEW			30 ~ ±0.50	APPROVE			SHEET	1/1	TITLE:	BTB3.0mm 02Pin Female SMT Right angle Header LCP V0 BLACK Tin(Sn) Plating Tape and Reel MPQ=1KPCS
REV	DATE		MODIFICATION DESCRIPTION	CHANGE	APPROVE	Angle DIM	± 2' TOL			PROJ.			

1 2 3 4 5 6 7 8 9 10