

RoHS

Specification:

- Voltage Rating: 600V AC/DC
- Insulation Resistance: 100MΩ Min
- Withstanding Voltage: 2200VAC(1Min)
- Contact resistance: 10mΩ(Max).
- Operation Temperature: -40°C to +105°C

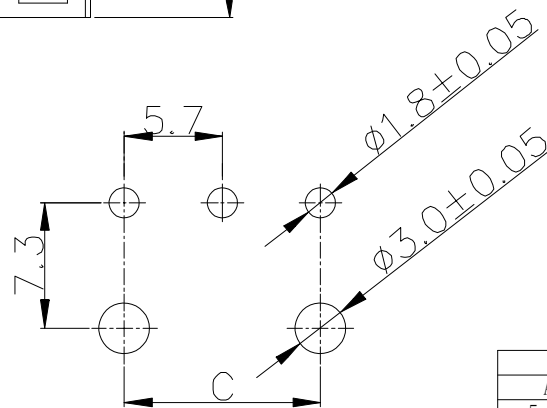
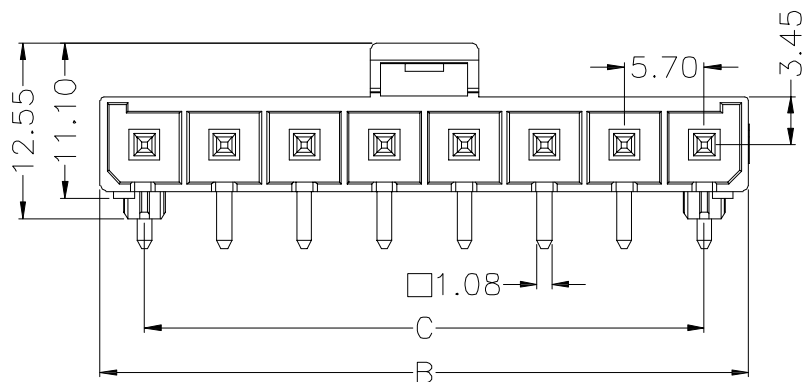
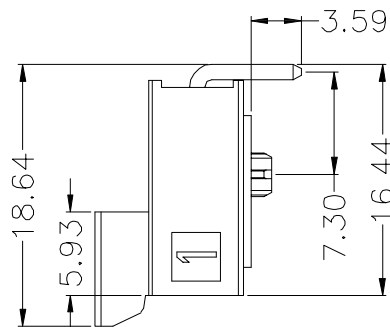
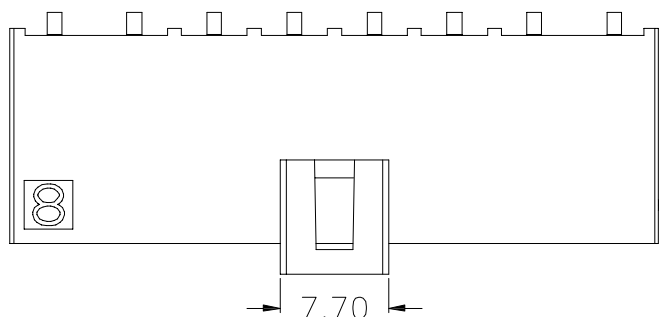
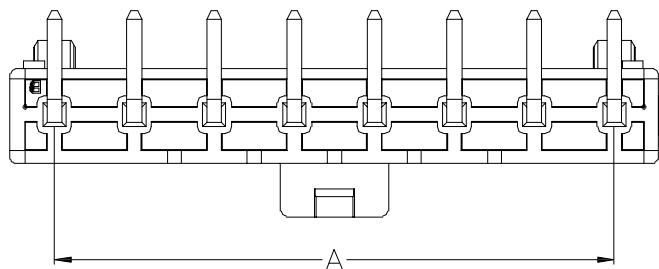
Material:

- Insulator (Housing): LCP (UL94V-0)
- Color: Black
- Material: Brass
- Finish: Tin Plating

Ordering Information


SCT5701WR -xx F 3 Black 173

No. of Pins See Table Insulation F=LCP V0 Package 3=Tray Color BK=Black



P B C board layout

Dimensions			Part NO	PIN
A	B	C		
5.70	12.00	/	SCT5701WR-02F3BK173	2
11.40	17.70	5.70	SCT5701WR-03F3BK173	3
17.10	23.40	11.40	SCT5701WR-04F3BK173	4
22.80	29.10	17.10	SCT5701WR-05F3BK173	5
28.50	34.80	22.80	SCT5701WR-06F3BK173	6
34.20	40.50	28.50	SCT5701WR-07F3BK173	7
39.90	46.20	34.20	SCT5701WR-08F3BK173	8

REV	DATE	MODIFICATION DESCRIPTION	CHANGE	APPROVE	OPERATION	DRAW	YANG	2016.06.06	SCALE	—	 SCONDAR ELECTRONIC LIMITED
					X. X	DESIGN			UNIT	mm	
					X. XX	CHECK	ZHONG	2016.06.06	SIZE	A4	
					X. XXX	APPROVE	Lisa	2016.06.06	SHEET	1/1	
A0	2016.06.06	NEW			Angle				PART NO.	Part NO.	SCT5701WR-xxF3BK173
					DIM				PROJ.	TITLE:	5.70mm Pitch DIP Single Row Right angle Through Hole PCB Header xxPin LCP V0 Black Tin(Sn) Plating PE Bag 3.59mm PC Tail Length MPQ=0.5KPCS