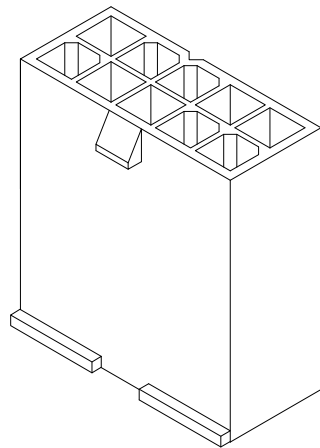
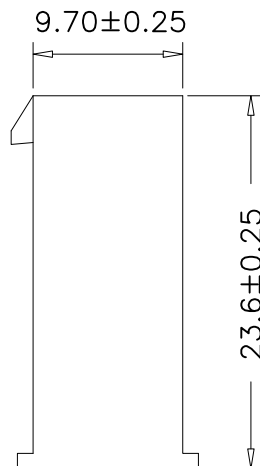
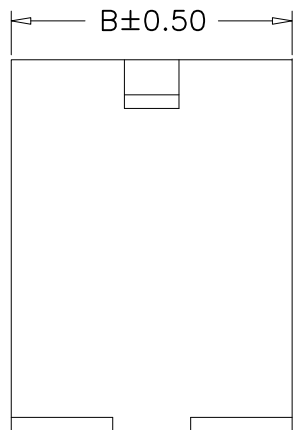
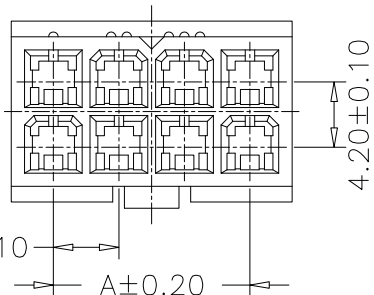


RoHS



Specification:

- Current Rating: 9A AC/DC
- Voltage Rating: 600V AC/DC
- Insulation Resistance: 1000MΩ Min
- Withstanding Voltage: 1500VAC(1Min)
- Operation Temperature: -25°C to +85°C
- Contact resistance: 20mΩ(Max)

Material:

- Insulator (Housing): Nylon 66 (UL94V-2)
- Color: Natural

Ordering Information


SCT4201FNA - 2\*\* C NA 103

No.of Pins  
02~24Pin

Insulation  
C=PA66 V2

Color  
NA=Natural

2x09	33.60	39.00			
2x08	29.40	34.80			
2x07	25.20	30.60			
2x06	21.00	26.40			
2x05	16.80	22.20			
2x04	12.60	18.00			
2x03	8.40	13.80	2x12	46.20	51.60
2x02	4.20	9.60	2x11	42.00	47.40
2x01	—	5.70	2x10	37.80	43.20
Poles	A	B	Poles	A	B
	Dimensions			Dimensions	

REV	DATE	MODIFICATION DESCRIPTION	CHANGE	APPROVE	OPERATION	DRAW	Peng	2021.07.10	SCALE	—	 SCONDAR ELECTRONIC LIMITED
A1	2021.07.10	Changed from SCT4201FHA-2xxP to SCT4201FNA-2xxCNA103	—	—	X.X	DESIGN			UNIT	mm	
AO	2006.05.02	NEW	—	—	X.XX	CHECK	Lisa	2021.07.10	SIZE	A4	
					X.XXX	APPROVE	Allen	2021.07.10	SHEET	1/1	
					Angle				PART NO.	SCT4201FNA-2xxCNA103	
					DIM				PROJECT	MX 4.20mm Pitch Female Housing Connector	