

RoHS

Specification:

- Current Rating: 5A AC/DC
- Voltage Rating: 250V AC/DC
- Insulation Resistance: 1000MΩ Min
- Withstanding Voltage: 1500VAC(1Min)
- Contact resistance: 20mΩ(Max).
- Operation Temperature: -25°C to +85°C

Material:

- Insulator (Housing): PA66 (UL94V-2)
- Color: Black

Ordering Information

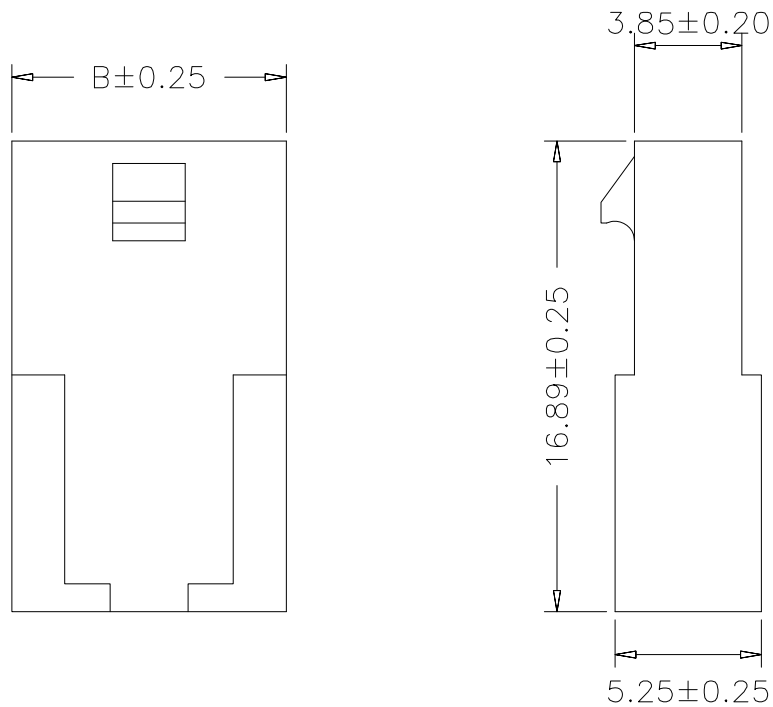
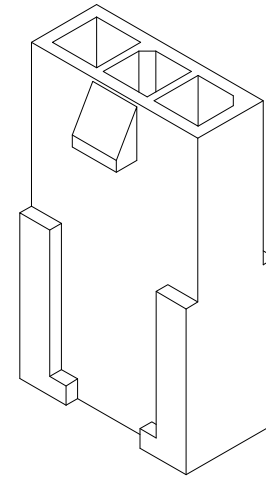
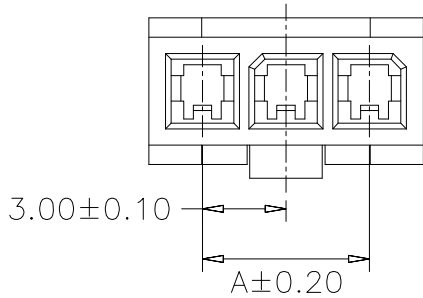
SCT3001FHA - xx C BK 119



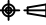
No. of Pins  
See Table

Insulation  
C=PA66 V2

Color  
BK=Black

10	27.00	30.85			
9	24.00	27.85			
8	21.00	24.85			
7	18.00	21.85			
6	15.00	18.85			
5	12.00	15.85			
4	9.00	12.85			
3	6.00	9.85	12	33.00	36.85
2	3.00	6.85	11	30.00	33.85
Poles	A	B	Poles	A	B
	Dimensions			Dimensions	



REV	DATE	MODIFICATION DESCRIPTION	CHANGE	APPROVE	OPERATION	DRAW	Peng	2021.07.10	SCALE	-	 SCONDAR ELECTRONIC LIMITED				
A1	2021.07.10	Changed from SCT3001FHA-xxP to SCT3001FHA-xxCBK119			X.X	±0.35			UNIT	mm					
AO	2019.10.15	NEW			X.XX	±0.25			SIZE	A4					
					X.XXX	±0.15		2021.07.10	SHEET	1/1	PART NO.	SCT3001FHA-xxCBK119 			
					Angle	± 3'		2021.07.10	PROJ.		TITLE:	MX3.0 Female Housing Connector			
					DIM	TOL	APPROVE	Allen							