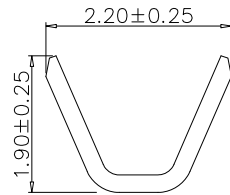
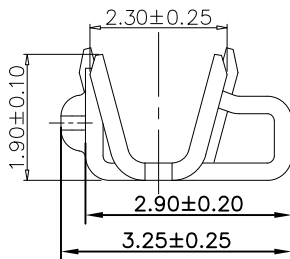
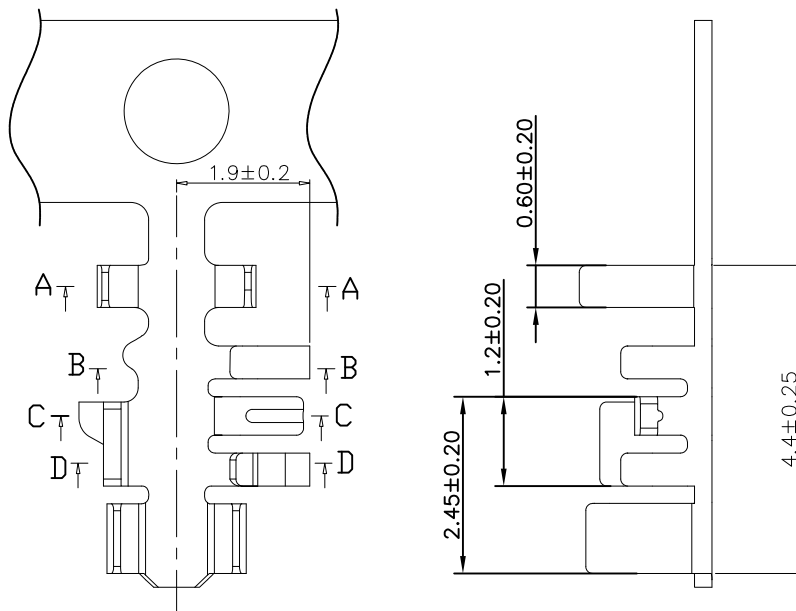
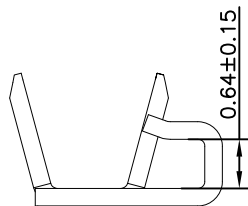


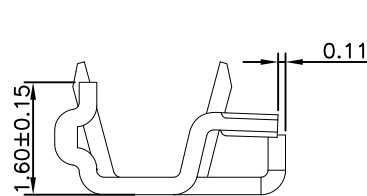
RoHS



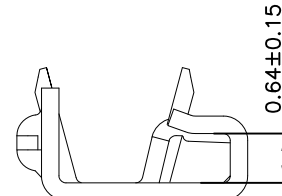
SECTION:A-A



SECTION:B-B



SECTION:C-C



SECTION:D-D

Specification:

- Current Rating: 1A AC/DC
- Voltage Rating: 100V AC/DC
- Insulation Resistance: 1000MΩ(Min)
- Contact resistance: 20mΩ(Max).
- Withstanding Voltage: 800VAC(Min)
- Operation Temperature: -25°C to +85°C



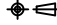
Material:

- Wire Range: 22AWG~26AWG
- Insulation O.D: 1.5mm Max
- Material: Phosphor Bronze, T=0.25mm
- Finish: Tin Plated
- Q'TY: 10,000Pcs/Reel

Ordering Information

SCT2007T P S 112

Material:
P=Phosphor Bronze S=Tin Plated

					OPERATION	DRAW	Peng	2021.07.15	SCALE	-	 SCONDAR ELECTRONIC LIMITED		
					X.X ±0.35	DESIGN			UNIT	mm			
					X.XX ±0.25	CHECK	Lisa	2021.07.15	SIZE	A4			
A1	2021.07.15	Changed from SCT2007TP to SCT2007TPS112			X.XXX ±0.15	APPROVE	Allen	2021.07.15	SHEET	1/1	PART NO.	SCT2007TPS112	
AO	2015.03.03	NEW			Angle ± 3'				PROJ.		TITLE:	AMP 2.0mm Terminal	
REV	DATE	MODIFICATION DESCRIPTION	CHANGE	APPROVE	DIM TOL								