

RoHS

Recommended P.C.B Layout
General Tolerance±0.05

Specification:

- Current Rating: 1A AC/DC
- Voltage Rating: 100V AC/DC
- Insulation Resistance: 500MΩ Min
- Withstanding Voltage: 500VAC(1Min)
- Contact resistance: 20mΩ(Max).
- Operation Temperature: -25°C to +85°C

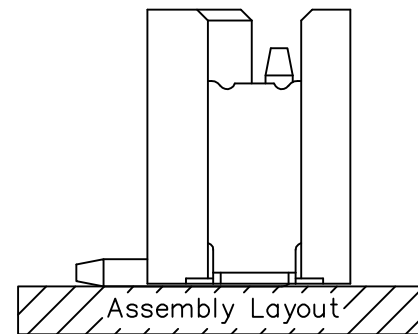
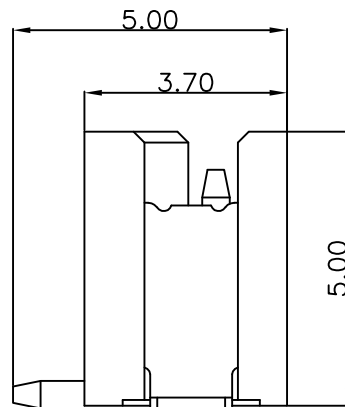
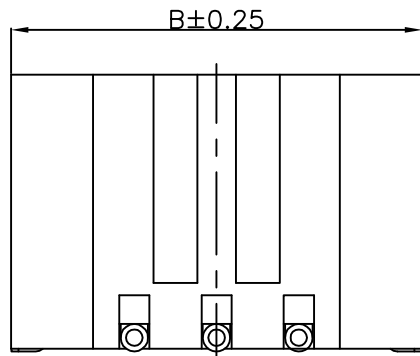
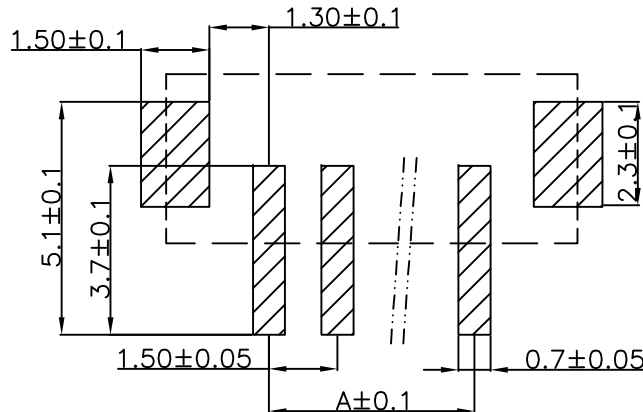
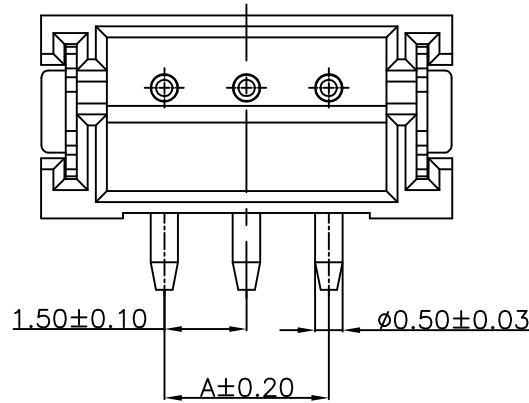
Material:

- Insulator (Housing): Nylon 9T (UL94V-0)
- Contacts:Brass,Tin Plated
- Color: Beige

Ordering Information

SCT1501WVS - ** E * BE 102

No.of Pins See Table
Insulation E=PA9T
Package 1=Tape&Reel 2=Tube
Color BE=Beige



11	15.00	19.50			
10	13.50	18.00			
9	12.00	16.50			
8	10.50	15.00			
7	9.00	13.50			
6	7.50	12.00	16	22.50	27.00
5	6.00	10.50	15	21.00	25.50
4	4.50	9.00	14	19.50	24.00
3	3.00	7.50	13	18.00	22.50
2	1.50	6.00	12	16.50	21.00
Poles	A	B	Poles	A	B
	Dimensions			Dimensions	

REV	DATE	MODIFICATION DESCRIPTION	CHANGE	APPROVE	OPERATION	DRAW	Peng	2021.07.06	SCALE		 SCONDAR ELECTRONIC LIMITED	
A1	2021.07.06	Changed from SCT1501WV-S-xxP to SCT1501WVS-xxExBE102			X.X	±0.35			UNIT	mm		
AO	2006.05.02	NEW			X.XX	±0.25	Lisa	2021.07.06	SIZE	A4		
					X.XXX	±0.15	Allen	2021.07.06	SHEET	1/1		
					Angle	± 3'			PROJ.	⊕	PART NO.	SCT1501WVS-xxExBE102
					DIM	TOL					TITLE:	ZH 1.50mm 180° SMT Wafer