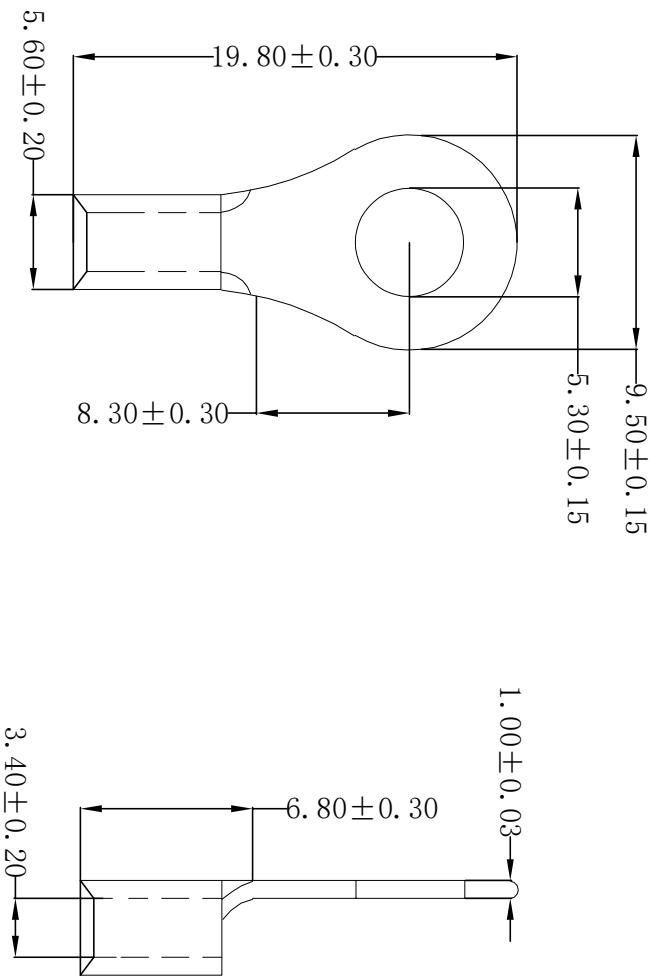



ROHS



**Technical requirements:**

- Material: Copper (紫铜)
- Applicable wire: 2.50~4.00mm<sup>2</sup>
- Surface treatment: Tin plating
- Plating thickness: 4.0um~6.0um
- Coating temperature: 120° /2H
- Max Current: 48A
- USA Screw: #10
- Appearance: the body should not be scratched or oxidized
- Meet rosh and customer environmental requirements

REV	DATE	MODIFICATION DESCRIPTION	CHANGE	APPROVE	OPERATION	DRAW	YANG	2016.06.06	SCALE	 <b>SCONDAR ELECTRONIC LIMITED</b>
A0	2016.06.06	NEW	---	---	X.X	DESIGN		---	UNIT	
					X.XX	CHECK	Lisa	---	SIZE	
					X.XXX			2016.06.06	SHEET	1/1
					Angle	APPROVE			PROJ.	
					±0.35					PART NO.
					±0.25					SCTRRB5.5-5141
					±0.15					Terminal 530R copper Tin plated 4.0~6.0mm <sup>2</sup>
					±3°					wire, ID:5.30mm OD:9.50mm MFR:1kives
					TOL					