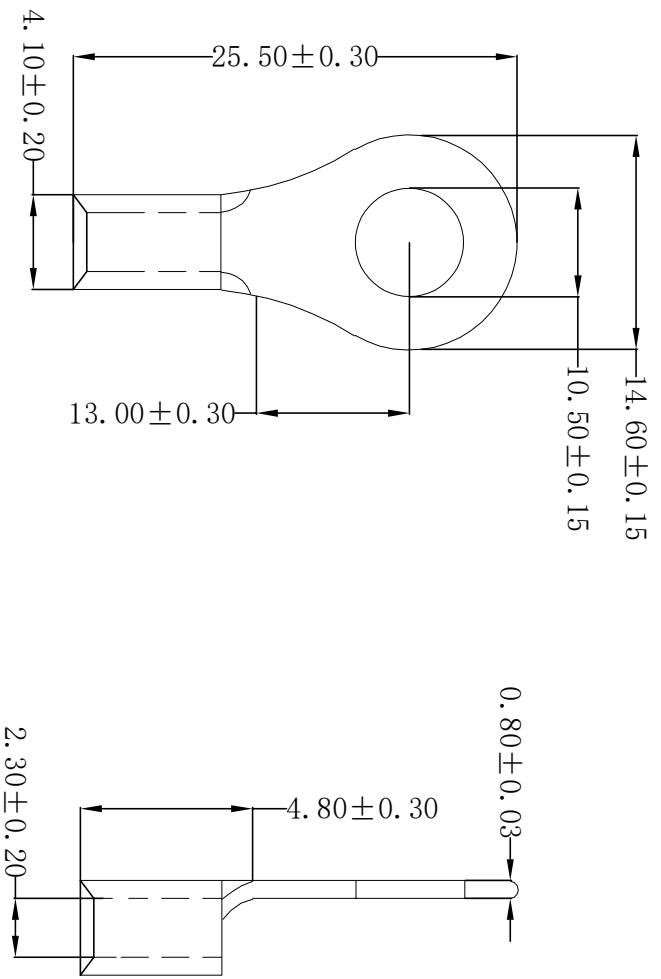



ROHS



Technical requirements:

- Material: Copper (紫铜)
- Applicable wire: 1.50~2.50mm²
- Surface treatment: Tin plating
- Plating thickness: 2.5um~5um
- Coating temperature: 120° /2H
- Max Current: 27A
- USA Screw: #3/18
- Appearance: the body should not be scratched or oxidized
- Meet rosh and customer environmental requirements

REV	DATE	MODIFICATION DESCRIPTION	CHANGE	APPROVE	OPERATION	DRAW	YANG	2016.06.06	SCALE	 SCONDAR ELECTRONIC LIMITED
A0	2016.06.06	NEW	---	---	X.X ±0.35	DESIGN		---	UNIT	
					X.XX ±0.25	CHECK	Lisa	2016.06.06	mm	
					X.XXX ±0.15	APPROVE			A4	PART NO. SCTRMB2-10141` Terminal 1050R copper Tin plated 1.5~2.5mm ² wire, ID:10.50mm OD:14.60mm MRQ=Kpces
					Angle ±3°				1/1	
					DIM				PROJ.	