

RoHS

Recommended P.C.B Layout
General Tolerance±0.05

Specification:

- Current Rating: 7A AC/DC
- Voltage Rating: 250V AC/DC
- Insulation Resistance: 1000MΩ(Min)
- Contact resistance: 10mΩ(Max).
- Withstanding Voltage: 1500VAC(Min)
- Operation Temperature: -25°C to +85°C

Material:

- Insulator Material: Nylon 66(UL94V-2)
- Contact Material: Brass
- Finish: Tin Plated
- Color: White

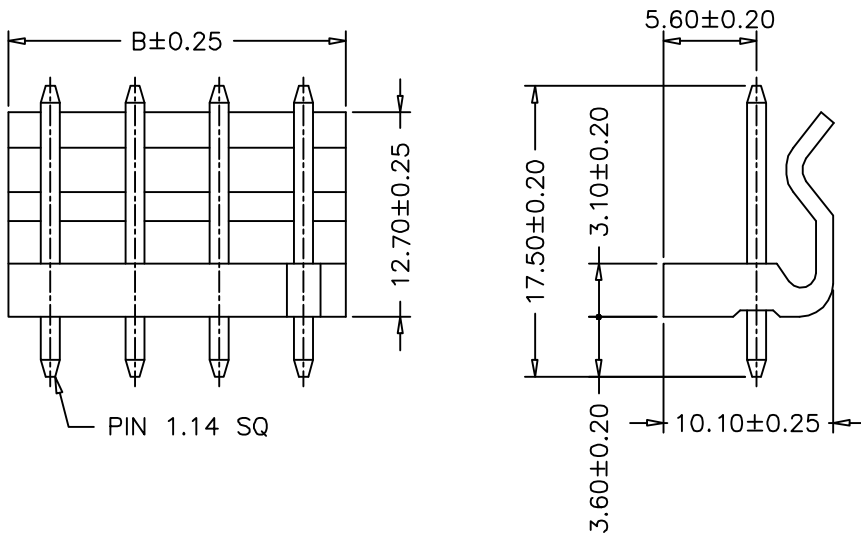
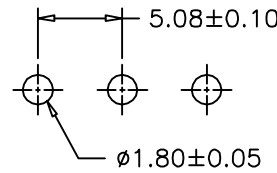
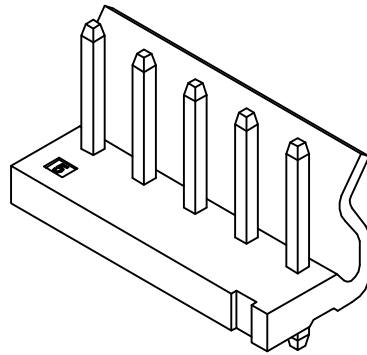
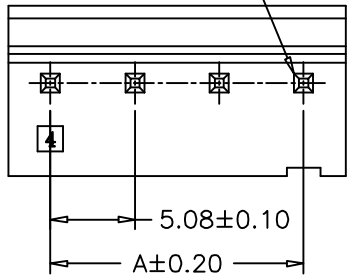
Ordering Information

SCT5080WV - xx C 0 WT 102

No.of Pins See Table
Material C=PA66 V2
Package 0=PE Bag
Color WT=White

9	40.64	45.72	17	81.28	86.36			
8	35.56	40.64	16	76.20	81.28			
7	30.48	35.56	15	71.12	76.20			
6	25.40	30.48	14	66.04	71.12			
5	20.32	25.40	13	60.96	66.04			
4	15.24	20.32	12	55.88	60.96	20	96.52	101.60
3	10.16	15.24	11	50.80	55.88	19	91.44	96.52
2	5.08	10.16	10	45.72	50.80	18	86.36	91.44
Poles	A B Dimensions		Poles	A B Dimensions		Poles A B Dimensions		

Circuit 1



REV	DATE	MODIFICATION DESCRIPTION	CHANGE	APPROVE	OPERATION	DRAW	Peng	2021.07.12	SCALE	-	SCONDAR ELECTRONIC LIMITED		
A1	2021.07.12	Changed from SCT5080WV-xxP to SCT5080WV-xxCOWT102			X.X	±0.35			UNIT	mm	SCONDAR ELECTRONIC LIMITED		
AO	2020.03.03	NEW			X.XX	±0.25			SIZE	A4			
					X.XXX	±0.15			SHEET	1/1			
					Angle	± 3'			PART NO.	SCT5080WV-xxCOWT102			
					DIM	TOL	APPROVE	Allen	2021.07.12	PROJ.	MX5.08 180° Wafer		