

RoHS

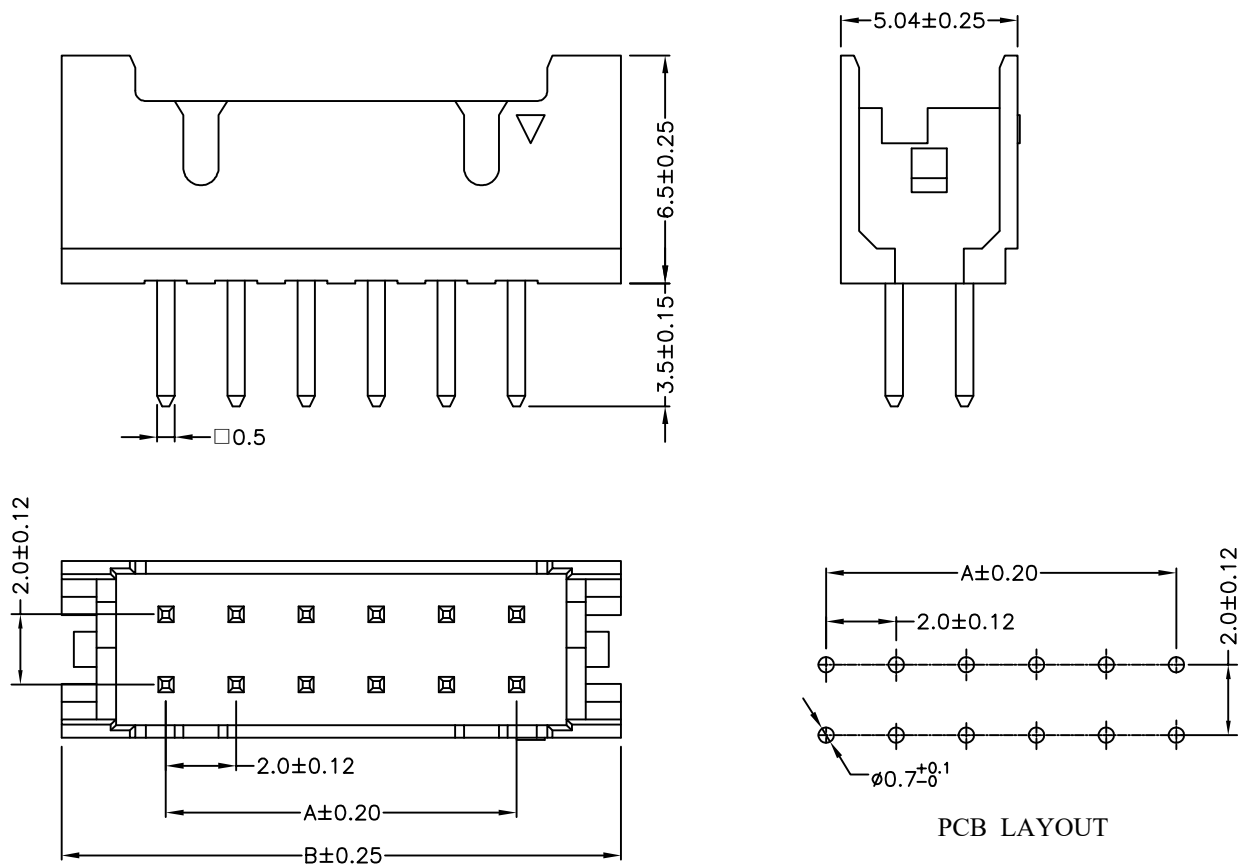
Specification:
 -Current Rating: 2A AC/DC
 -Voltage Rating: 250V AC/DC
 -Insulation Resistance: 1000MΩ Min
 -Withstanding Voltage: 800VAC(1Min)
 -Contact resistance: 20mΩ(Max).
 -Operation Temperature: -25°C to +85°C
Material:
 -Insulator (Housing): PA66 (UL94V-2)
 -Color: Beige
 -Contacts:Brass/Tin Plated

Ordering Information

SCT2033WV - 2xx C 0 BE 169

No. of Pins See Table Insulation C=PA66 V2 Package 0=PE Bag Color BE=Beige

Dimensions		Part NO	PIN
A	B		
2.00	7.95	SCT2033WV-202C0BE169	2*02
4.00	9.95	SCT2033WV-203C0BE169	2*03
6.00	11.95	SCT2033WV-204C0BE169	2*04
8.00	13.95	SCT2033WV-205C0BE169	2*05
10.00	15.95	SCT2033WV-206C0BE169	2*06
12.00	17.95	SCT2033WV-207C0BE169	2*07
14.00	19.95	SCT2033WV-208C0BE169	2*08
16.00	21.95	SCT2033WV-209C0BE169	2*09
18.00	23.95	SCT2033WV-210C0BE169	2*10
20.00	25.95	SCT2033WV-211C0BE169	2*11
22.00	27.95	SCT2033WV-212C0BE169	2*12
24.00	29.95	SCT2033WV-213C0BE169	2*13
26.00	31.95	SCT2033WV-214C0BE169	2*14
28.00	33.95	SCT2033WV-215C0BE169	2*15
30.00	35.95	SCT2033WV-216C0BE169	2*16
32.00	37.95	SCT2033WV-217C0BE169	2*17
34.00	39.95	SCT2033WV-218C0BE169	2*18
36.00	41.95	SCT2033WV-219C0BE169	2*19
38.00	43.95	SCT2033WV-220C0BE169	2*20



PCB LAYOUT

SCONDAR ELECTRONIC, LTD
 ENGINEER XJ2412

					OPERATION	DRAW	Xiong	2024.05.13	SCALE	—	 SCONDAR ELECTRONIC LIMITED	
					X.X	±0.30			UNIT	mm		
					X.XX	±0.20			SIZE	A4		
					X.XXX	±0.10			SHEET	1/1		
A0	2024.05.13		NEW		Angle	±3°					Part No.	SCT2033WV-2xxC0BE169
REV	DATE		MODIFICATION DESCRIPTION	CHANGE	APPROVE	DIM	TOL	APPROVE	PROJ.		TITLE:	PHDS2.0mm PA66 V2 Beige 2xxPin DIP WV Sokcet Bag