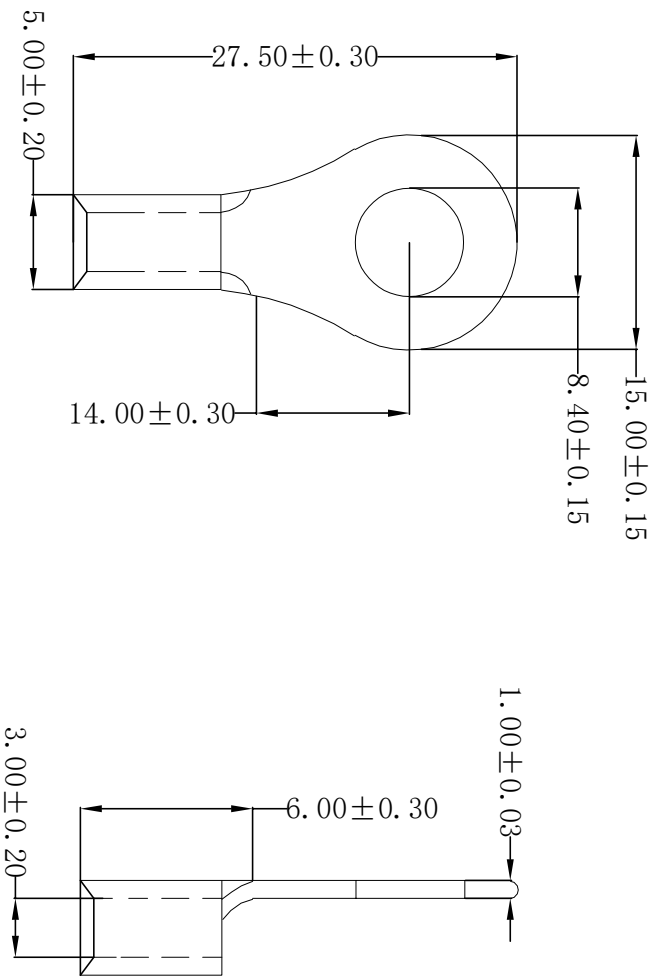


ROHS



Technical requirements:

- Material: Copper (紫铜)
- Applicable wire: 2.50~4.00mm²
- Surface treatment: Tin plating
- Plating thickness: 2.5um~5um
- Coating temperature: 120° /2H
- Max Current: 37A
- USA Screw: #5/16
- Appearance: the body should not be scratched or oxidized
- Meet rosh and customer environmental requirements

| | | | | | | | | | | | | |
|-----|------------|--------------------------|--------|---------|----------------|---------|------|------------|-------|------|----------|---|
| REV | DATE | MODIFICATION DESCRIPTION | CHANGE | APPROVE | OPERATION | DRAW | YANG | 2016.06.06 | SCALE | UNIT | | SCONDAR ELECTRONIC LIMITED SCTRMB3.5-8141 |
| A0 | 2016.06.06 | NEW | | | X.X ±0.35 | DESIGN | | | mm | | | |
| | | | | | X.XX ±0.25 | CHECK | Lisa | 2016.06.06 | SHEET | A4 | | |
| | | | | | X.XXX ±0.15 | APPROVE | | | 1/1 | 1/1 | PART NO. | |
| | | | | | Angle ±3° | | | | PROJ. | | TITLE: | Terminal 840R copper Tin plated 2.5~4.0mm ² wire, ID:8.40mm OD:15.00mm MPQ=1KPCS |
| | | | | | DIM TOL. | | | | | | | |