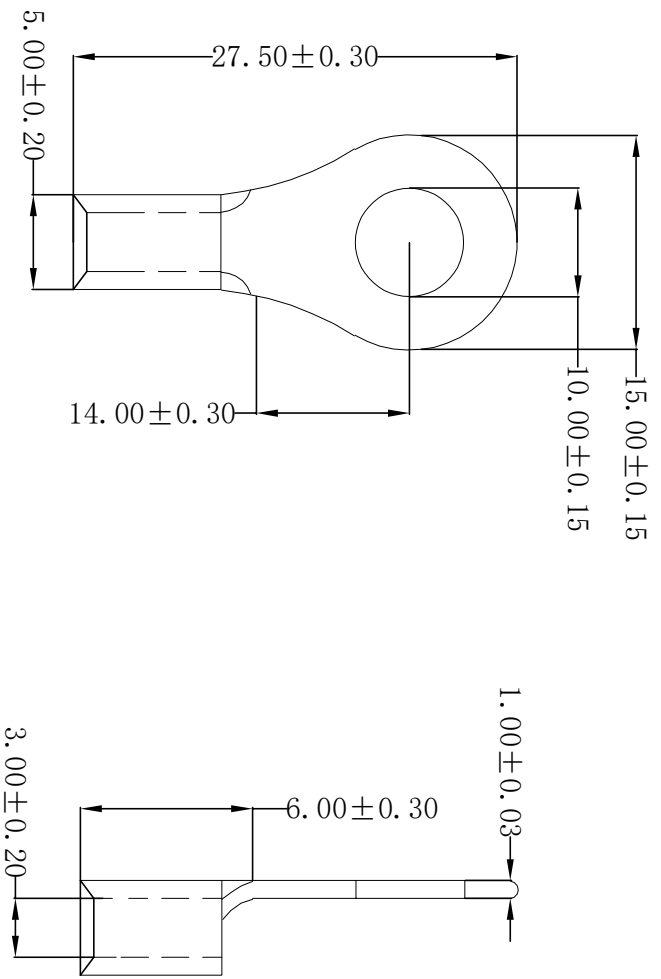



ROHS



Technical requirements:

- Material: Copper (紫铜)
- Applicable wire: 2.50~4.00mm²
- Surface treatment: Tin plating
- Plating thickness: 2.5um~5um
- Coating temperature: 120° /2H
- Max Current: 37A
- USA Screw: #3/8
- Appearance: the body should not be scratched or oxidized
- Meet rosh and customer environmental requirements

REV	DATE	MODIFICATION DESCRIPTION	CHANGE	APPROVE	OPERATION	DRAW	YANG	2016.06.06	SCALE	 SCONDAR ELECTRONIC LIMITED
A0	2016.06.06	NEW	---	---	X.X ±0.35	DESIGN		---	UNIT	
					X.XX ±0.25	CHECK	Lisa	---	SIZE	
					X.XXX ±0.15	APPROVE		---	SHEET	PART NO.
					Angle ±3°			---	PROJ.	SCTRRB3.5-10141
					DIM TOL			---		Terminal 1000R copper Tin plated 2.5~4.0mm ² wire, ID:10.00mm OD:15.00mm MRQ=Kbps