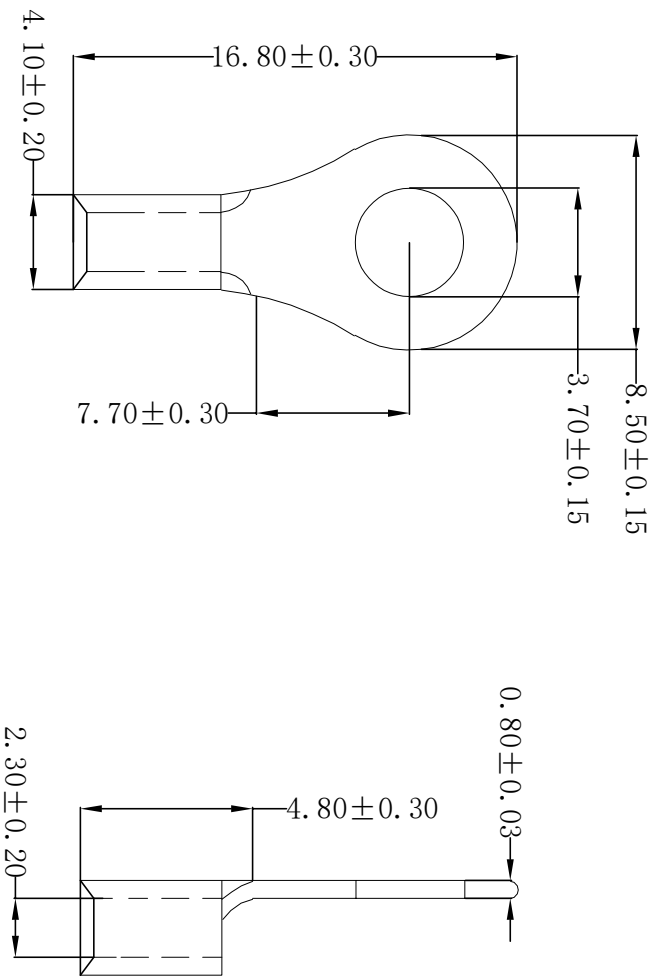


ROHS



Technical requirements:

- Material: Copper (紫铜)
- Applicable wire: 1.50~2.50mm²
- Surface treatment: Tin plating
- Plating thickness: 2.5um~5um
- Coating temperature: 120° /2H
- Max Current: 27A
- USA Screw: #6
- Appearance: the body should not be scratched or oxidized
- Meet rosh and customer environmental requirements

REV	DATE	MODIFICATION DESCRIPTION	CHANGE	APPROVE	OPERATION	DRAW	YANG	2016.06.06	SCALE	<p>SCONDAR ELECTRONIC LIMITED</p>
A0	2016.06.06	NEW	---	---	DESIGN	Lisa	2016.06.06	mm		
					CHECK			A4		
					Angle			1/1	SHEET	PART NO.
					±0.35	APPROVE			PROJ.	SCTRRB2-3.5L141
					±0.25					Terminal 370R copper Tin plated 1.5~2.5mm ²
					±0.15					wire, ID:3.70mm OD:8.50mm MFG=Ifores
					±3°					
					DIM					
					TOL					