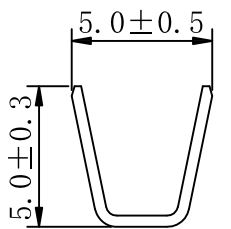
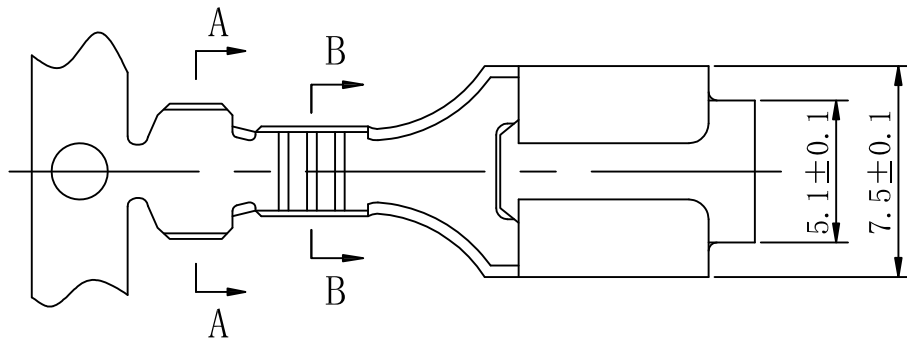
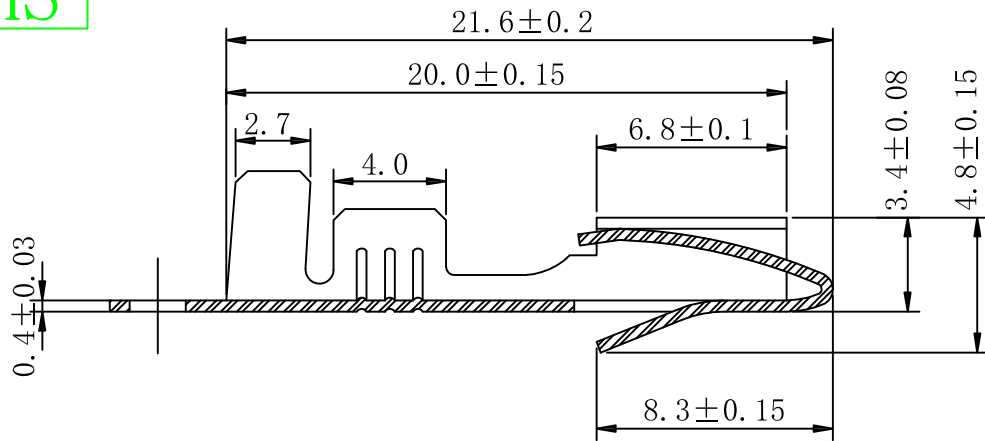
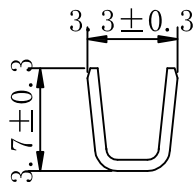


RoHS



SECTION:A-A



SECTION:B-B

Specification:

- Current Rating: 12A AC/DC
- Voltage Rating: 250V AC/DC
- Insulation Resistance: 1000MΩ(Min)
- Contact resistance: 10mΩ(Max).
- Withstanding Voltage: 1500VAC(Min)
- Operation Temperature: -25°C to +85°C

Material:


- Wire Range:14~20AWG
- Material: Brass
- Finish: Tin Plated

Ordering Information

SCT63090FT B S 102

Material:  
B=Brass

Contact Plated  
S=Tin Flash

					OPERATION	DRAW	Peng	2021.07.12	SCALE	-	 SCONDAR ELECTRONIC LIMITED		
					X.X ±0.35	DESIGN			UNIT	mm			
A1	2021.07.12	Changed from SCT63090-FT to SCT63090FTBS102			X.XX ±0.25		CHECK	Lisa	2021.07.12	SIZE		A4	
AO	2018.03.03	NEW			X.XXX ±0.15	APPROVE	Allen	2021.07.12	SHEET	1/1		PART NO.	SCT63090FTBS102
REV	DATE	MODIFICATION DESCRIPTION	CHANGE	APPROVE	Angle DIM	± 3' TOL	PROJECT	TITLE:	63090 Female Terminal				