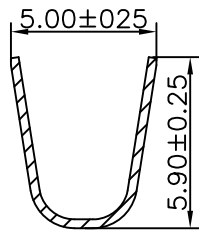
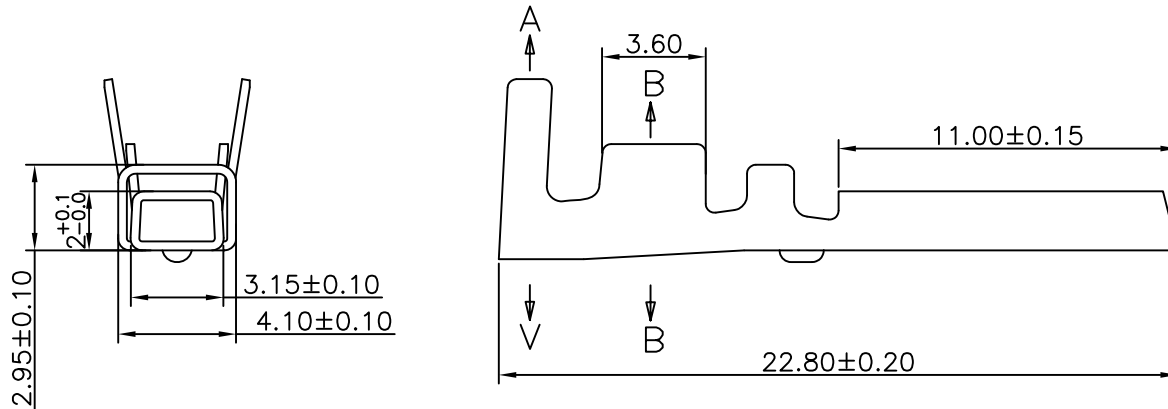
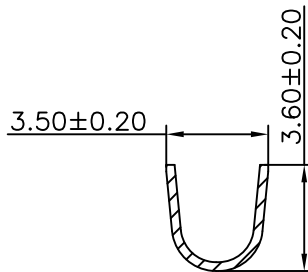


RoHS



SECTION:A-A



SECTION:B-B

Specification:


- Current Rating: 10A AC/DC
- Voltage Rating: 300V AC/DC
- Insulation Resistance: 1000MΩ(Min)
- Contact resistance: 10mΩ(Max).
- Withstanding Voltage: 1500VAC(Min)
- Operation Temperature: -25°C to +85°C

Material:

- Wire Range:12-22AWG
- Material: Phosphor Bronze
- Finish: Tin Plated

Ordering Information

SCT6203MT P S 115  
 Material: P=Phosphor Bronze S=Tin Plated

|     |            |  |                          |        |         |           |       |         |            |            |     |   |                      |
|-----|------------|--|--------------------------|--------|---------|-----------|-------|---------|------------|------------|-----|---|----------------------|
|     |            |  |                          |        |         | OPERATION | DRAW  | Peng    | 2018.03.03 | SCALE      | -   | <br>SCONDAR ELECTRONIC LIMITED |                      |
|     |            |  |                          |        |         | X.X       | ±0.35 |         |            | UNIT       | mm  |   |                      |
|     |            |  |                          |        |         | X.XX      | ±0.25 |         |            | SIZE       | A4  |   |                      |
|     |            |  |                          |        |         | X.XXX     | ±0.15 |         | 2018.03.03 | SHEET      | 1/1 |   | PART NO.             |
| AO  | 2018.03.03 |  | NEW                      |        |         | Angle     | ± 3'  |         |            | PROJ.      | ☉   | TITLE:  | JST VL Male Terminal |
| REV | DATE       |  | MODIFICATION DESCRIPTION | CHANGE | APPROVE | DIM       | TOL   | APPROVE | Allen      | 2018.03.03 |     |   |                      |