

RoHS

Recommended P.C.B Layout
General Tolerance±0.05

Specification:

- Current Rating: 9A AC/DC
- Voltage Rating: 600V AC/DC
- Insulation Resistance: 1000MΩ(Min)
- Contact resistance: 20mΩ(Max).
- Withstanding Voltage: 1500VAC(Min)
- Operation Temperature: -25°C to +85°C

Material:

- Insulator Material: Nylon 66(UL94V-2)
- Contact Material: Brass
- Finish: Tin Plated
- Color: Natural

Ordering Information

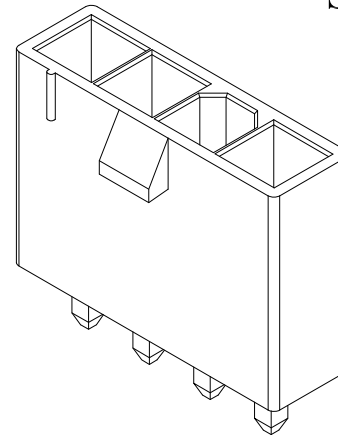
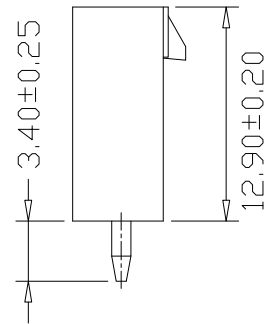
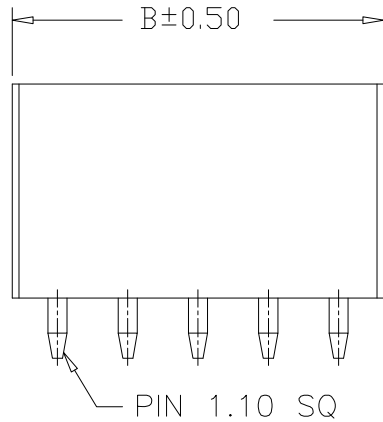
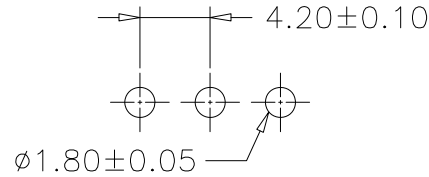
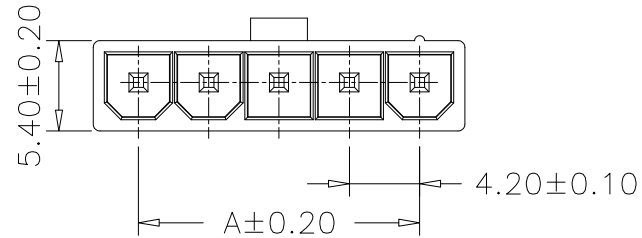
SCT4201WV - xx C 0 NA 103

No.of Pins
See Table



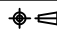
Material
C=PA66 V2

Package
0=PE Bag

Color
NA=Natural



5	16.80	22.20
4	12.60	18.00
3	8.40	13.80
2	4.20	9.60
Poles	A	B
	Dimensions	

REV	DATE	MODIFICATION DESCRIPTION	CHANGE	APPROVE	OPERATION	DRAW	Peng	2021.07.10	SCALE	-	 SCONDAR ELECTRONIC LIMITED
A1	2021.07.10	Changed from SCT4201WV-xxP to SCT4201WV-xxC0NA103			X.X	±0.35			UNIT	mm	
AO	2020.03.03	NEW			X.XX	±0.25			SIZE	A4	
					X.XXX	±0.15			SHEET	1/1	
					Angle	± 3'			PART NO.	SCT4201WV-xxC0NA103	
					DIM	TOL	APPROVE	Allen	2021.07.10	PROJ.	 TITLE: MX4.2 180° Wafer