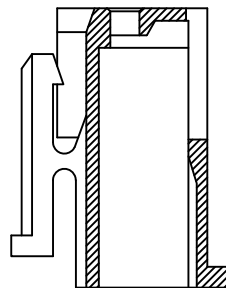
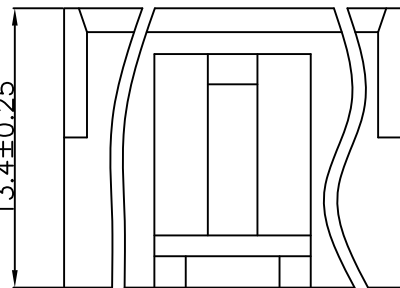
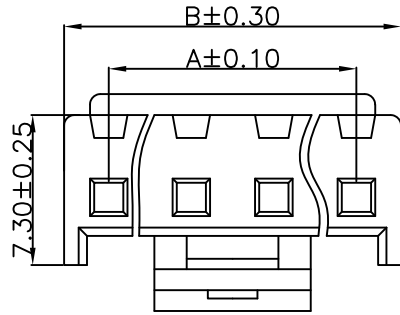
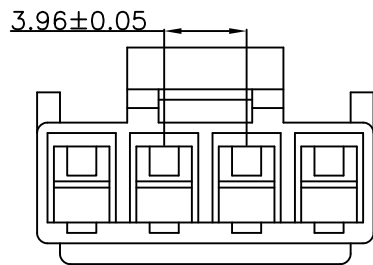


RoHS



SEC A-A



Specification:

- Current Rating: 7A AC/DC
- Voltage Rating: 250V AC/DC
- Insulation Resistance: 1000MΩ Min
- Withstanding Voltage: 1500VAC(1Min)
- Applicable PC board thickness:0.063 (1.6mm)
- Contact resistance:Initial Voice/10mΩ max
After environmental Texting/20mΩ
- Operation Temperature: -25°C to +85°C

Material:

- Insulator (Housing): Nylon 66 (UL94V-2)
- Color: White

Ordering Information

SCT3961H - xx C WT 109

No.of Pins See Table
Insulation C=PA66 V2
Color WT=White

11	39.60	43.88			
10	35.64	39.92			
9	31.68	35.92			
8	27.72	31.96			
7	23.76	28.00			
6	19.80	24.04			
5	15.84	20.08			
4	11.88	16.12			
3	7.92	12.16			
2	3.96	8.20	12	43.56	47.84
Poles	A	B	Poles	A	B
	Dimensions			Dimensions	

REV	DATE	MODIFICATION DESCRIPTION	CHANGE	APPROVE	OPERATION	DRAW	Peng	2021.07.10	SCALE	-	 SCONDAR ELECTRONIC LIMITED	
A1	2021.07.10	Changed from SCT3961H-xxPB to SCT3961H-xxCWT109			X.X	±0.35			UNIT	mm		
AO	2019.10.15	NEW			X.XX	±0.25			SIZE	A4		
					X.XXX	±0.15			SHEET	1/1		
					Angle	± 3'			PROJ.	⊕	PART NO.	SCT3961H-xxCWT109
					DIM	TOL					TITLE:	VH3.96 Housing Connector