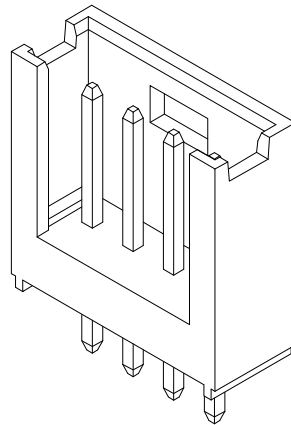
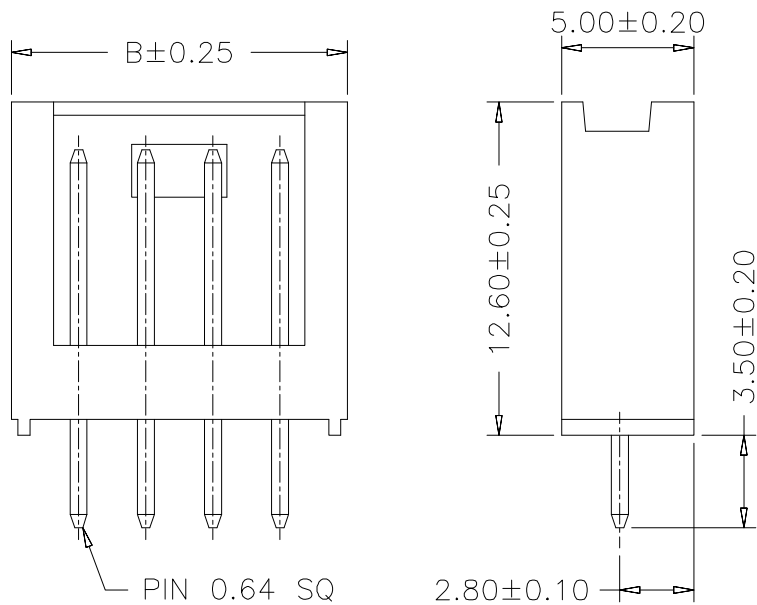
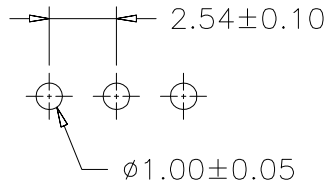
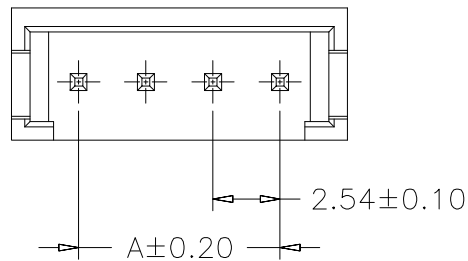


RoHS

Recommended P.C.B Layout
General Tolerance±0.05



Specification:

- Current Rating: 3A AC/DC
- Voltage Rating: 250V AC/DC
- Insulation Resistance: 1000MΩ Min
- Withstanding Voltage: 1000VAC Min
- Contact resistance: 20mΩ(Max).
- Operation Temperature: -25°C to +85°C

Material:

- Insulator (Housing): Nylon 66 (UL94V-0)
- Contacts: Brass
- Solder: Tin Plated
- Color: Black

Ordering Information

SCT2542WV - ** B 0 BK 108

No.of Pins See Table
Insulation B=PA66
Package 0=PE Bag
Color BK=Black

10	22.86	27.94	19	45.72	50.80			
9	20.32	25.40	18	43.18	48.26			
8	17.78	22.86	17	40.64	45.72			
7	15.24	20.32	16	38.10	43.18			
6	12.70	17.78	15	33.56	40.64			
5	10.16	15.24	14	33.02	38.10			
4	7.62	12.70	13	30.48	33.56	22	53.34	58.42
3	5.08	10.16	12	27.94	33.02	21	50.80	55.88
2	2.54	7.62	11	25.40	30.48	20	48.26	53.34
Poles	A	B	Poles	A	B	Poles	A	B
	Dimensions			Dimensions			Dimensions	

REV	DATE	MODIFICATION DESCRIPTION	CHANGE	APPROVE	OPERATION	DRAW	Peng	2021.07.07	SCALE	-	UNIT	mm	SCONDAR ELECTRONIC LIMITED						
A1	2021.07.07	Changed from SCT2542WV-xxP to SCT2542WV-xxB0BK108			X.X	±0.35	DESIGN				SIZE	A4	PART NO. SCT2542WV-xxB0BK108						
AO	2019.10.15	NEW			X.XXX	±0.15	CHECK	Lisa	2021.07.07	SHEET	1/1	PROJ.						TITLE: MX2.54mm Pitch 180° Wafer Connector	
					Angle	± 3'	APPROVE	Allen	2021.07.07										