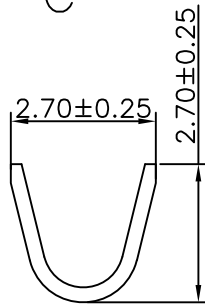
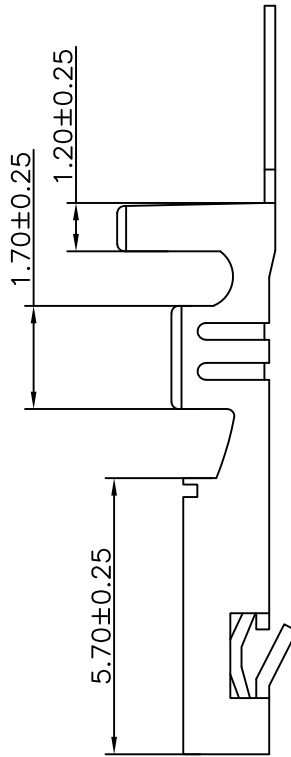
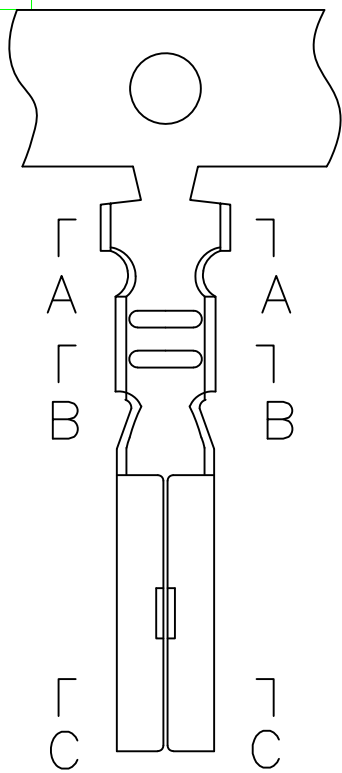
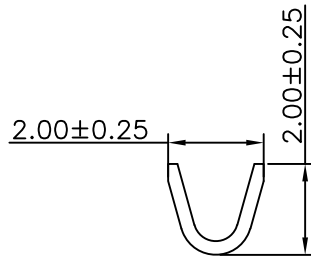


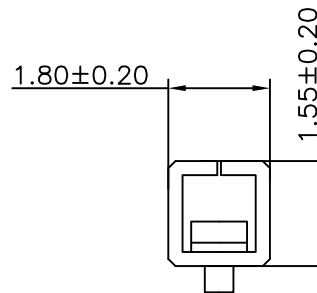
RoHS



SECTION:A-A



SECTION:B-B



SECTION:C-C

Specification:

- Current Rating: 2A AC/DC
- Voltage Rating: 250V AC/DC
- Insulation Resistance: 500MΩ(Min)
- Contact resistance: 20mΩ(Max).
- Withstanding Voltage: 1500VAC(Min)
- Operation Temperature: -25°C to +85°C

Material:


- Wire Range:22AWG~28AWG(OD:1.8mm)
- Material: Brass,T=0.25mm
- Finish: Tin Plated
- Q'TY: 10,000Pcs/Reel

Ordering Information

SCT2507FT B S 102

Material:
B=Brass

Contact Plated
S=Tin Plated

					OPERATION	DRAW	Peng	2021.07.06	SCALE	-	 SCONDAR ELECTRONIC LIMITED	
					X.X ±0.35	DESIGN			UNIT	mm		
					X.XX ±0.25		CHECK	Lisa	2021.07.06	SIZE		A4
A1	2021.07.06	Changed from SCT2505FTP to SCT2505FTPS109			X.XXX ±0.15	APPROVE	Allen	2021.07.06	SHEET	1/1	PART NO.	SCT2505FTPS109
AO	2015.03.03	NEW			Angle ± 3'				PROJ.	⌀	TITLE:	JST 2.50mm Female Terminal
REV	DATE	MODIFICATION DESCRIPTION	CHANGE	APPROVE	DIM TOL							