

RoHS

Recommended P.C.B Layout
General Tolerance±0.05

Specification:

- Current Rating: 3A AC/DC
- Voltage Rating: 250V AC/DC
- Insulation Resistance: 1000MΩ Min
- Withstanding Voltage: 1000VAC Min
- Contact resistance: 20mΩ(Max).
- Operation Temperature: -25°C to +85°C
- Applicable Wire: 22-30AWG

Material:

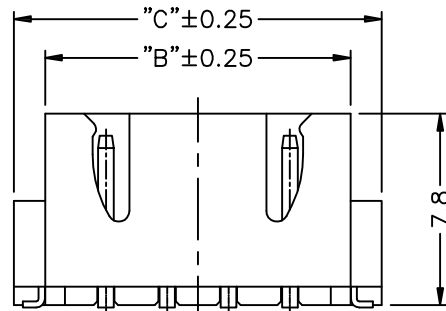
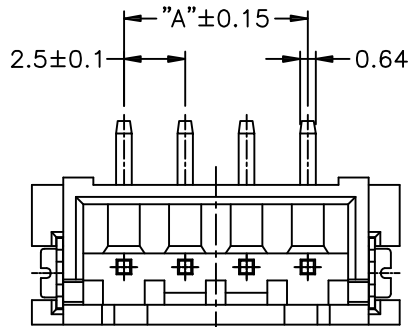
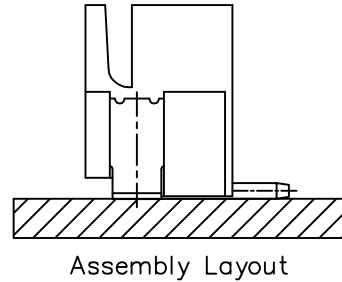
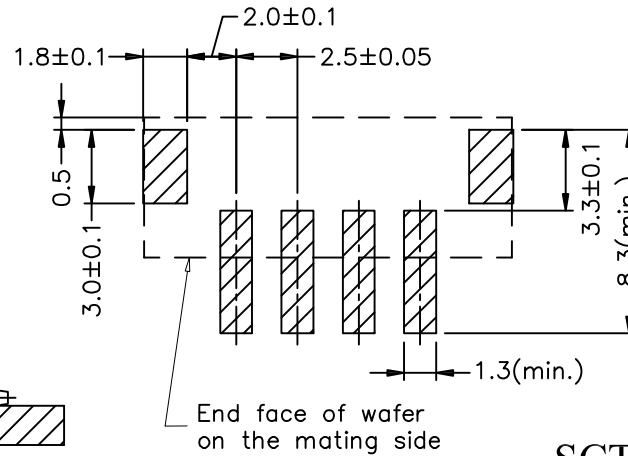
- Insulator (Housing): PA9T (UL94V-0)
- Contacts:Brass
- Solder: Phosphor Bronze
- Color: Beige

Ordering Information

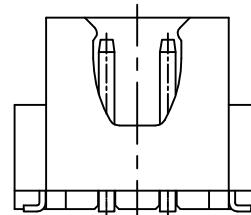
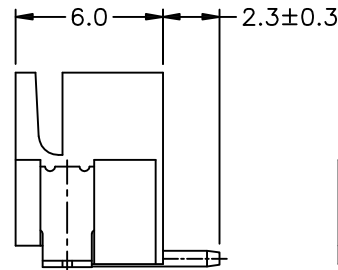
SCT2501WVS - ** E 1 BE 102

No.of Pins See Table Insulation E=PA9T Package 1=Tape&Reel Color BE=Beige

	11	25.0	29.95	32.5				
	10	22.5	27.45	30.0				
	09	20.0	24.95	27.5				
	08	17.5	17.5	25.0				
	07	15.0	19.95	22.5				
	06	12.5	17.45	20.0	16	37.5	42.45	45.0
	05	10.0	14.95	17.5	15	35.0	39.95	42.5
	04	7.5	12.45	15.0	14	32.5	37.45	40.0
	03	5.0	9.95	12.5	13	30.0	34.95	37.5
	02	2.5	7.45	10.0	12	27.5	32.45	35.0
Poles		A	B	C	Poles	A	B	C
	Dimensions					Dimensions		



3P~16P样式



2P样式

						OPERATION	DRAW	Peng	2021.07.06	SCALE	-	 SCONDAR ELECTRONIC LIMITED	
						X.X ±0.35	DESIGN			UNIT	mm		
	A1	2021.07.06	Changed from SCT2501WV-S-xxP to SCT2501WVS-xxE1BE102			X.XX ±0.25		CHECK	Lisa	2021.07.06	SIZE		A4
	AO	2006.05.02	NEW			X.XXX ±0.15	APPROVE	Allen	2021.07.06	SHEET	1/1		PART NO.
REV	DATE	MODIFICATION DESCRIPTION		CHANGE	APPROVE	Angle ± 3'	DIM	TOL	PROJ.	TITLE:	2.50mm Pitch 180° SMT Wafer Connector		