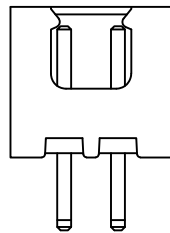
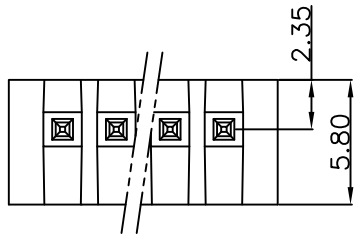
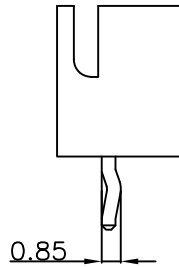
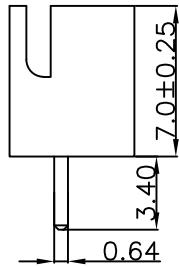
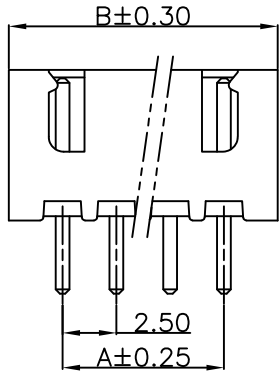
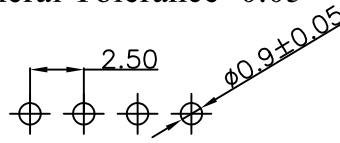
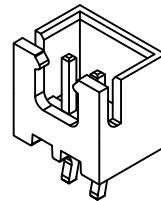


RoHS

Recommended P.C.B Layout  
General Tolerance±0.05



2Pin



Specification:

- Current Rating: 3A AC/DC
- Voltage Rating: 250V AC/DC
- Insulation Resistance: 1000MΩ Min
- Withstanding Voltage: 1000VAC(1Min)
- Contact resistance: 10mΩ(Max).
- Operation Temperature: -25°C to +85°C

Material:


- Insulator (Housing): Nylon 66 (UL94V-0)
- Contacts: Brass Tin Plated
- Color: Red, White

Ordering Information

SCT2501WV - \*\* B 0 \*\* 143

No. of Pins See Table  
Insulation B=PA66  
Package 0=PE Bag  
Color RD=Red WT=White

11	25.00	30.00			
10	22.50	27.50	20	47.50	52.50
9	20.00	25.00	19	45.00	50.00
8	17.50	22.50	18	42.50	47.50
7	15.00	20.00	17	40.00	45.00
6	12.50	17.50	16	37.50	42.50
5	10.00	15.00	15	35.00	40.00
4	7.50	12.50	14	32.50	37.50
3	5.00	10.00	13	30.00	35.00
2	2.50	7.50	12	27.50	32.50
Poles	A	B	Poles	A	B
	Dimensions			Dimensions	

REV	DATE	MODIFICATION DESCRIPTION	CHANGE	APPROVE	OPERATION	DRAW	Peng	2021.07.06	SCALE	-	 SCONDAR ELECTRONIC LIMITED	
AO	2021.07.06	NEW			X.X	±0.35			UNIT	mm		
					X.XX	±0.25			SIZE	A4		
					X.XXX	±0.15		2021.07.06	SHEET	1/1		
					Angle	± 3'			PROJ.	☉	PART NO.	SCT2501WV-xxB0xx143
					DIM	TOL		2021.07.06			TITLE:	XH 2.50mm 180° Wafer