

RoHS

Specification:

- Current Rating: 3A AC/DC
- Voltage Rating: 250V AC/DC
- Insulation Resistance: 1000MΩ Min
- Withstanding Voltage: 1000VAC(1Min)
- Contact resistance: 20mΩ(Max).
- Operation Temperature: -25°C to +85°C

Material:

- Insulator (Housing): Nylon 66 (UL94V-2)
- Color: White

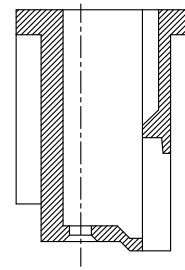
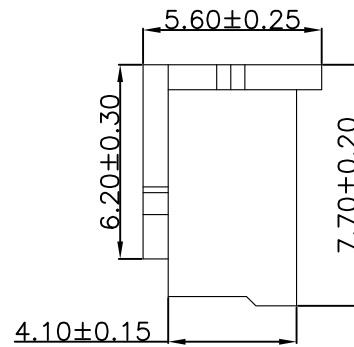
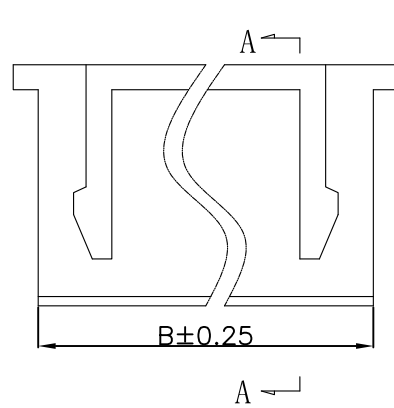
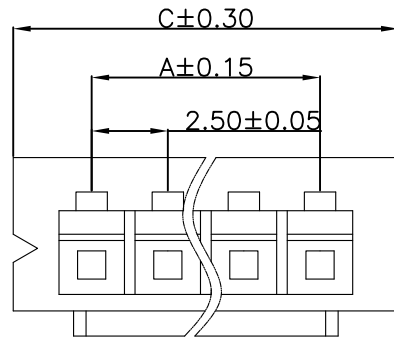
Ordering Information

SCT2501MH - xx C WT 109

No.of Pins
See Table


Insulation
C=PA66 V2

Color
WT=White



SECTION A-A

10	22.50	25.70	27.30				
9	20.00	23.20	24.80				
8	17.50	20.70	22.30				
7	15.00	18.20	19.80	16	37.50	40.70	42.30
6	12.50	15.70	17.30	15	35.00	38.20	39.80
5	10.00	13.20	14.80	14	32.50	35.70	37.30
4	7.50	10.70	12.30	13	30.00	33.20	34.80
3	5.00	8.20	9.80	12	27.50	30.70	32.30
2	2.50	5.70	7.30	11	25.00	28.20	29.80
Poles	A	B	C	Poles	A	B	C
	Dimensions				Dimensions		

REV	DATE	MODIFICATION DESCRIPTION	CHANGE	APPROVE	OPERATION	DRAW	Peng	2021.07.06	SCALE	-	 SCONDAR ELECTRONIC LIMITED	
A1	2021.07.06	Changed from SCT2501H-xxP to SCT2501MH-xxCWT109			X.X	±0.35			UNIT	mm		
AO	2009.10.15	NEW			X.XX	±0.25			SIZE	A4		
					X.XXX	±0.15		2021.07.06	SHEET	1/1		
					Angle	± 3'			PROJ.	☉	PART NO.	SCT2501MH-xxCWT109
					DIM	TOL		2021.07.06			TITLE:	XH 2.50mm Pitch Housing Connector