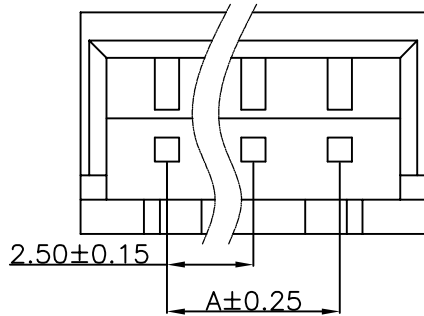
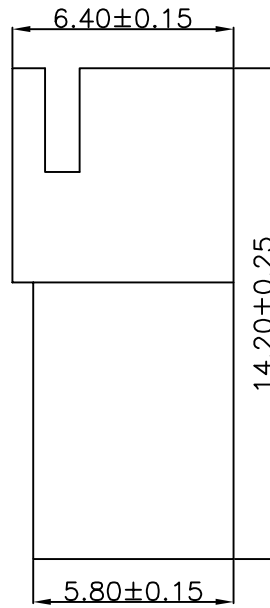
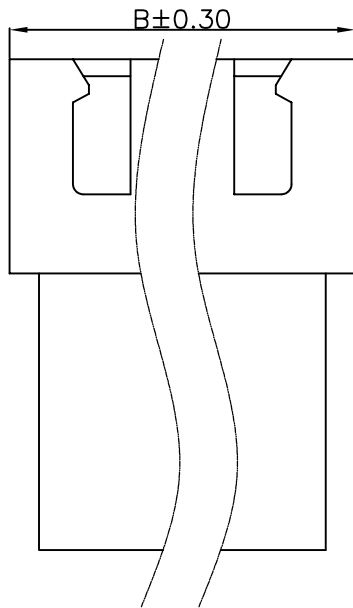


RoHS



东莞市晟凯达电子科技有限公司
工程专用章



Specification:

- Current Rating: 3A AC/DC
- Voltage Rating: 250V AC/DC
- Insulation Resistance: 1000MΩ Min
- Withstanding Voltage: 1000VAC(1Min)
- Contact resistance: 20mΩ(Max).
- Operation Temperature: -25°C to +85°C

Material:

- Insulator (Housing): Nylon 66 (UL94V-2)
- Color: White

Ordering Information

SCT2501FH - xx C WT 160

No.of Pins
See Table

Insulation
C=PA66 V2

Color
WT=White

受控

10	22.50	27.50			
9	20.00	25.00			
8	17.50	22.50			
7	15.00	20.00	16	37.50	42.50
6	12.50	17.50	15	35.00	40.00
5	10.00	15.00	14	32.50	37.50
4	7.50	12.50	13	30.00	35.00
3	5.00	10.00	12	27.50	32.50
2	2.50	7.50	11	25.00	30.00
Poles	A	B	Poles	A	B
	Dimensions			Dimensions	

REV	DATE	MODIFICATION DESCRIPTION	CHANGE	APPROVE	OPERATION	DRAW	Peng	2009.10.15	SCALE	-	 SCONDAR ELECTRONIC LIMITED	
					X.X	±0.35			UNIT	mm		
					X.XX	±0.25			SIZE	A4		
A0	2009.10.15	NEW			X.XXX	±0.15	Lisa	2009.10.15	SHEET	1/1		
					Angle	± 3'			PROJ.	☯	PART NO.	SCT2501FH-xxCWT160
					DIM	TOL	Allen	2009.10.15			TITLE:	XH 2.50mm Pitch Female Housing Connector