

RoHS

Recommended P.C.B Layout  
General Tolerance±0.05

Specification:

- Current Rating: 2A AC/DC
- Voltage Rating: 125V AC/DC
- Insulation Resistance: 800MΩ Min
- Withstanding Voltage: 200VAC(1Min)
- Contact resistance: 20mΩ(Max).
- Operation Temperature: -25°C to +85°C

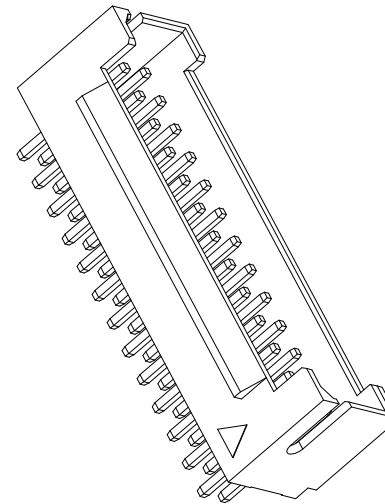
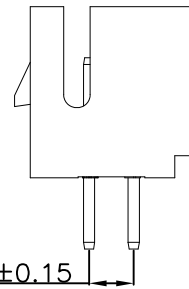
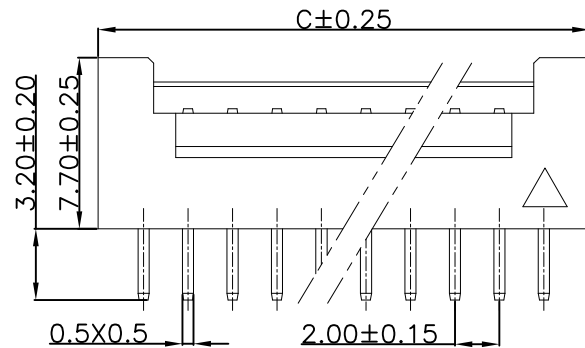
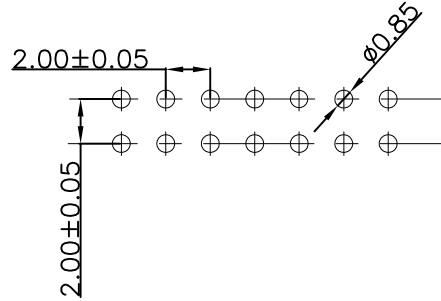
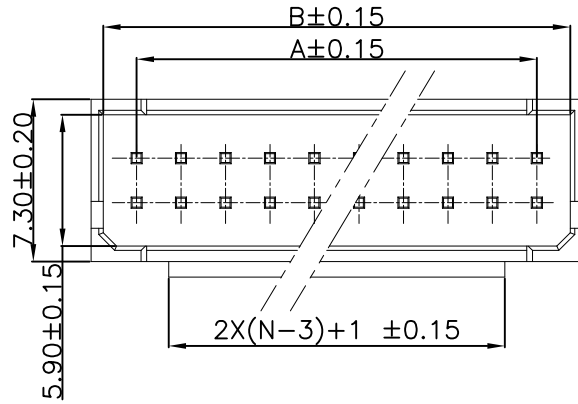
Material:

- Insulator (Housing): PA46 (UL94V-0)
- Contacts:Brass Tin Plated
- Color: Beige

Ordering Information

SCT2009WV - 2\*\* G 3 BE 101

No. of Pins See Table  
Insulation G=PA46  
Package 3=Tray  
Color BE=Beige



2*12	22.00	24.85	25.85				
2*11	20.00	22.85	23.85	2*20	38.00	40.85	41.85
2*10	18.00	20.85	21.85	2*19	36.00	38.85	39.85
2*9	16.00	18.85	19.85	2*18	34.00	36.85	37.85
2*8	14.00	16.85	17.85	2*17	32.00	34.85	35.85
2*7	12.00	14.85	15.85	2*16	30.00	32.85	33.85
2*6	10.00	12.85	13.85	2*15	28.00	30.85	31.85
2*5	8.00	10.85	11.85	2*14	26.00	28.85	29.85
2*4	6.00	8.85	9.95	2*13	24.00	26.85	27.85
Poles	A	B	B	Poles	A	B	C
	Dimensions				Dimensions		

REV	DATE	MODIFICATION DESCRIPTION	CHANGE	APPROVE	OPERATION	DRAW	Peng	2021.07.10	SCALE	UNIT	mm	SCONDAR ELECTRONIC LIMITED
A1	2021.07.10	Changed from SCT2009WV-2xxP to SCT2009WV-2xxG3BE101			X.X	±0.35						
AO	2015.05.15	NEW			X.XX	±0.25						PHSD 2.00mm 180° Wafer
					X.XXX	±0.15						
					Angle	± 3'						
					DIM	TOL						

SCONDAR ELECTRONIC LIMITED

PART NO. SCT2009WV-2xxG3BE101

PHSD 2.00mm 180° Wafer