

RoHS

Recommended P.C.B Layout
General Tolerance±0.05

Specification:

- Current Rating: 2A AC/DC
- Voltage Rating: 100V AC/DC
- Insulation Resistance: 1000MΩ Min
- Withstanding Voltage: 800VAC(1Min)
- Contact resistance: 20mΩ(Max).
- Operation Temperature: -25°C to +85°C

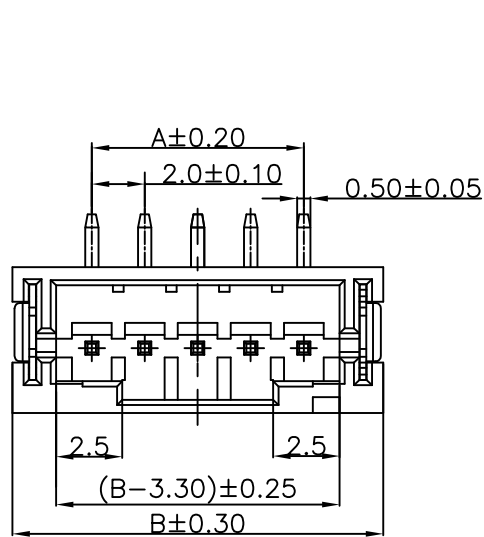
Material:

- Insulator (Housing): Nylon 9T (UL94V-0)
- Contacts: Brass Tin Plated
- Color: Beige

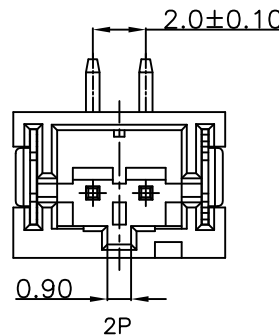
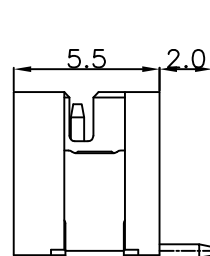
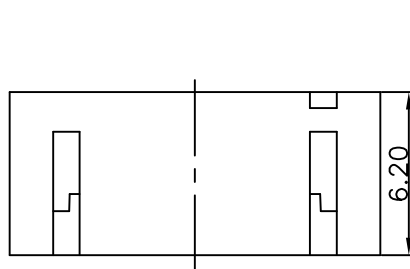
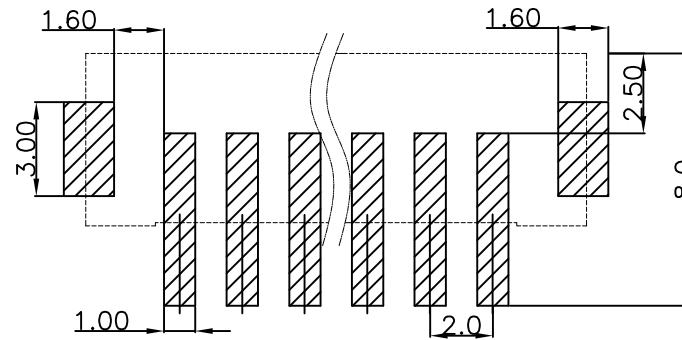
Ordering Information

SCT2001WVS - ** E 1 BE 102

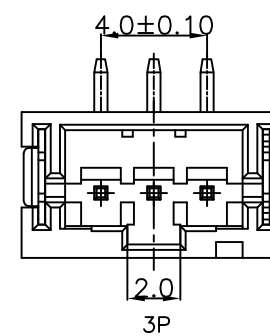
No.of Pins See Table Insulation E=PA9T Package 1=Tape&Reel Color BE=Beige



4P-16P




2P



3P

10	18.00	24.00			
9	16.00	22.00			
8	14.00	20.00			
7	12.00	18.00	16	30.00	36.00
6	10.00	16.00	15	28.00	34.00
5	8.00	14.00	14	26.00	32.00
4	6.00	12.00	13	24.00	30.00
3	4.00	10.00	12	22.00	28.00
2	2.00	8.00	11	20.00	26.00
Poles	A	B	Poles	A	B
	Dimensions			Dimensions	

REV	DATE	MODIFICATION DESCRIPTION	CHANGE	APPROVE	OPERATION	DRAW	Peng	2021.07.06	SCALE		 SCONDAR ELECTRONIC LIMITED
A1	2021.07.06	Changed from SCT2001WV-S-xxP to SCT2001WVS-xxE1BE102			X.X	±0.35			UNIT	mm	
AO	2006.05.02	NEW			X.XX	±0.25			SIZE	A4	
					X.XXX	±0.15			SHEET	1/1	
					Angle	± 3'			PART NO.	SCT2001WVS-xxE1BE102	
					DIM	TOL			PROJECT	PH 2.00mm 180° SMT Wafer	