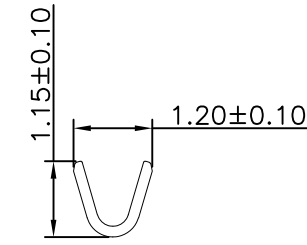
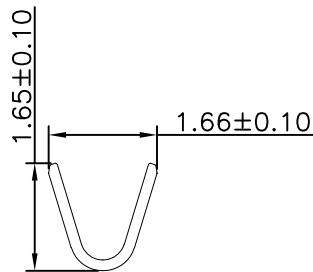
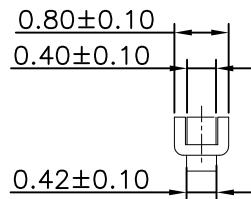
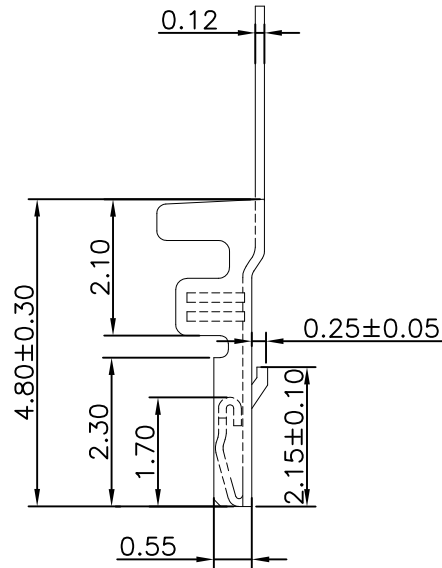
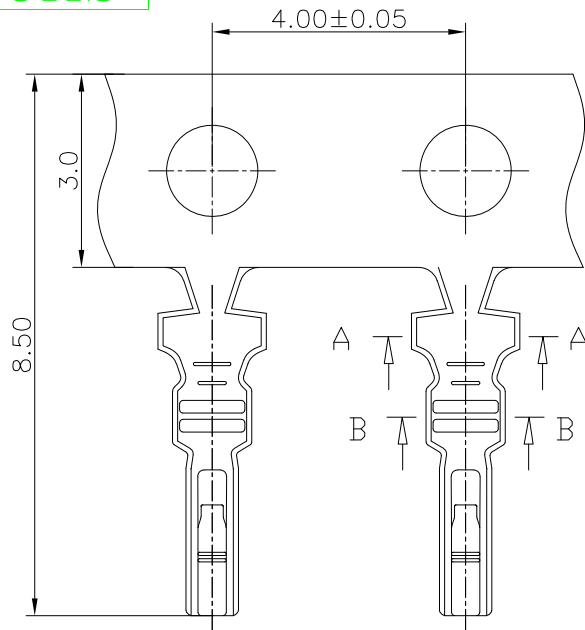


RoHS



SECTION A-A

SECTION B-B

Specification:

- Current Rating: 1A AC/DC
- Voltage Rating: 150V AC/DC
- Insulation Resistance: 100MΩ(Min)
- Contact resistance: 20mΩ(Max).
- Withstanding Voltage: 500VAC(Min)
- Operation Temperature: -40°C to +85°C



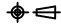
Material:

- Wire Range: 26AWG~30AWG
- Insulation O.D: 0.9mm Max
- Material: Phosphor Bronze, T=0.12mm
- Finish: Tin Plated

Ordering Information

SCT1258T P S 101

Material:
P=Phosphor Bronze S=Tin Plated

					OPERATION	DRAW	Peng	2021.07.02	SCALE	-	 SCONDAR ELECTRONIC LIMITED	
					X.X ±0.35	DESIGN			UNIT	mm		
					X.XX ±0.25		CHECK	Lisa	2021.07.02	SIZE		A4
A1	2021.07.02	Changed from SCT1258-TP to SCT1258TPS101							SHEET	1/1	PART NO.	SCT1258TPS101 
AO	2021.03.03	NEW							PROJ.		TITLE:	GH 1.25mm Terminal
REV	DATE	MODIFICATION DESCRIPTION			CHANGE	APPROVE						