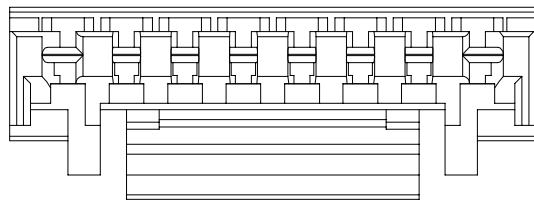
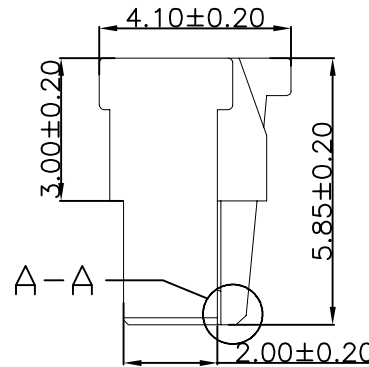
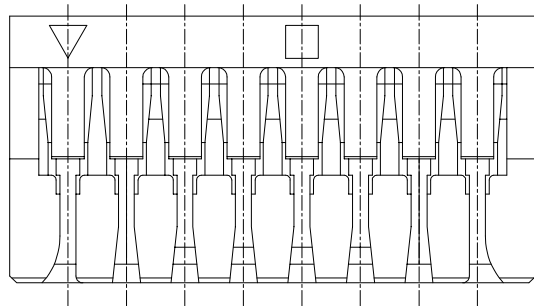
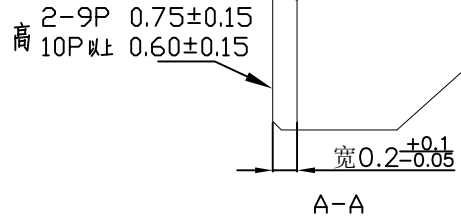
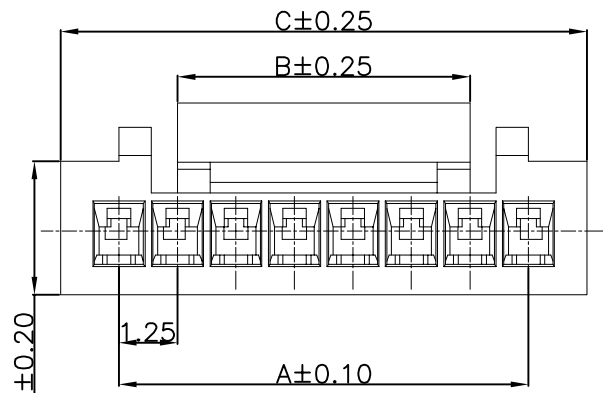


RoHS



Specification:

- Current Rating: 1A AC/DC
- Voltage Rating: 150V AC/DC
- Insulation Resistance: 100MΩ Min
- Withstanding Voltage: 500VAC(1Min)
- Contact resistance: 20mΩ(Max).
- Operation Temperature: -40°C to +85°C

Material:

- Insulator (Housing): Nylon 66 (UL94V-0)
- Color: White

Ordering Information

SCT1258H - xx B WT 105

No. of Pins See Table      Insulation B=PA66      Color WT=White

10	11.25	8.20	13.75				
9	10.00	6.25	12.50				
8	8.75	6.25	11.25				
7	7.50	6.25	10.00				
6	6.25	6.25	8.75	15	17.50	8.20	20.00
5	5.00	4.25	7.50	14	16.25	8.20	18.75
4	3.75	4.25	6.25	13	15.00	8.20	17.50
3	2.50	3.20	5.00	12	13.75	8.20	16.25
2	1.25	2.20	3.75	11	12.50	8.20	15.00
Poles	A	B	C	Poles	A	B	C
	Dimensions				Dimensions		

东莞市晟凯达电子科技有限公司  
工程专用章

受控

REV	DATE	MODIFICATION DESCRIPTION	CHANGE	APPROVE	OPERATION	DRAW	Peng	2021.07.02	SCALE	-	SCONDAR SCONDAR ELECTRONIC LIMITED	
A1	2021.07.02	Changed from SCT1258H-xxP to SCT1258H-xxBWT105			X.X	±0.35			UNIT	mm		
A0	2021.07.02	NEW			X.XX	±0.25	Lisa	2021.07.02	SIZE	A4		
					X.XXX	±0.15	Allen	2021.07.02	SHEET	1/1		
					Angle	± 3'			PROJ.	⌀	PART NO.	SCT1258H-xxBWT105
					DIM	TOL			TITLE:		GH 1.25mm Pitch Housing Connector	