

RoHS

Recommended P.C.B Layout  
General Tolerance±0.05

Specification:

- Current Rating: 1A AC/DC
- Voltage Rating: 50V AC/DC
- Insulation Resistance: 100MΩ Min
- Withstanding Voltage: 500VAC(1Min)
- Contact resistance: 20mΩ(Max).
- Operation Temperature: -25°C to +85°C

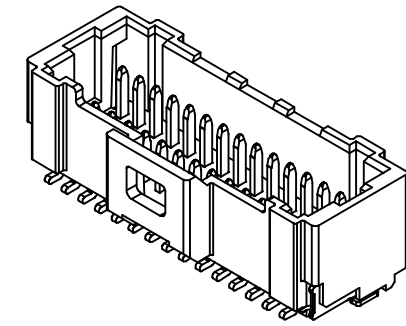
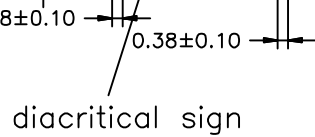
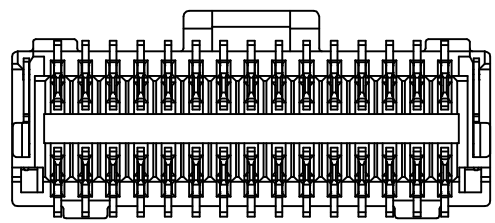
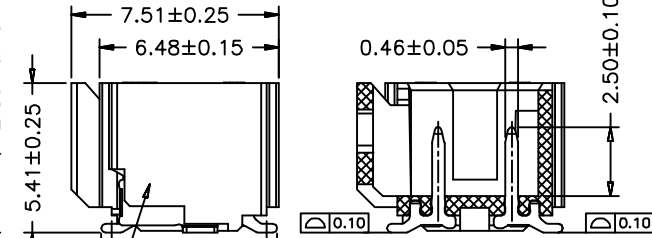
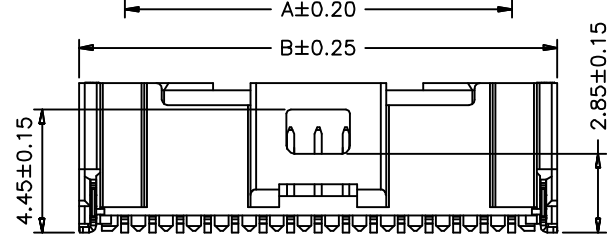
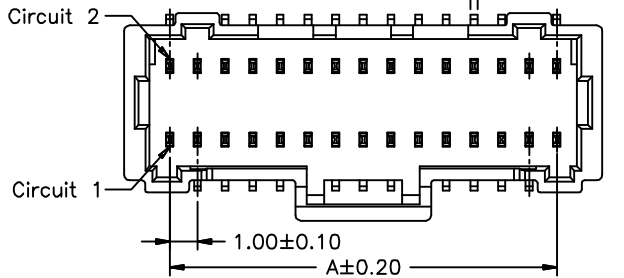
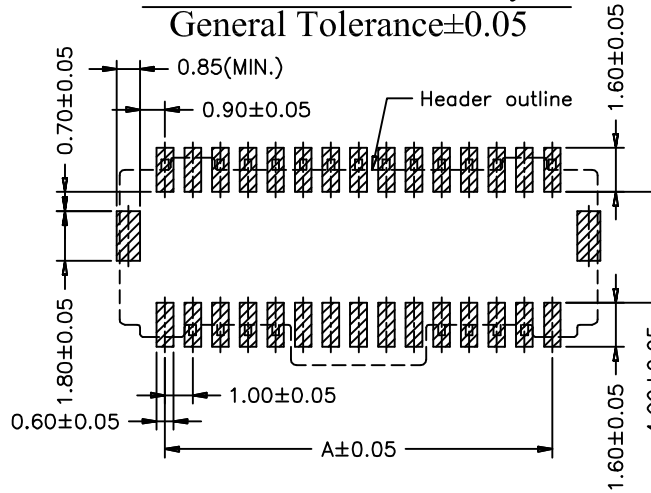
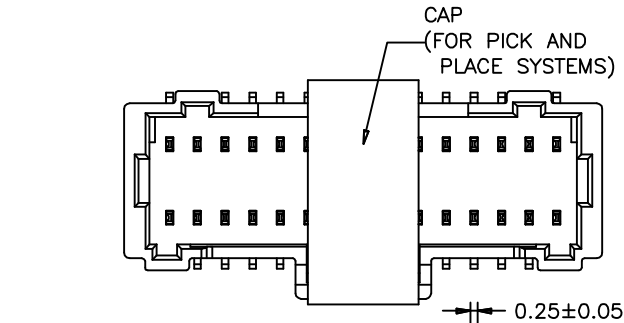
Material:

- Insulator (Housing): PA6T (UL94V-0)
- Contacts: Phos. Bronze, Tin Plated
- Color: Natural

Ordering Information

SCT1014WVS -2\*\* B \* NA 101

No. of Pins See Table  
Insulation B=PA6T  
Package 1=Tape&Reel 2=Tube  
Color NA=Natural



2x25	24.00	27.30
2x20	19.00	22.30
2x16	15.00	18.30
2x15	14.00	17.30
2x10	9.00	12.30
Poles	A	B
	Dimensions	

					OPERATION	DRAW	Peng	2021.07.12	SCALE	-	 SCONDAR ELECTRONIC LIMITED	
					X.X ±0.35	DESIGN			UNIT	mm		
	A1	2021.07.12	Changed from SCT1014WV-S-2xxP to SCT1014WVS-2xxBxNA101		X.XX ±0.25		CHECK	Lisa	2021.07.12	SIZE		A4
	AO	2006.05.02	NEW		X.XXX ±0.15	APPROVE	Allen	2021.07.12	SHEET	1/1		PART NO.
REV	DATE	MODIFICATION DESCRIPTION		CHANGE	APPROVE	DIM	TOL		PROJ.	⌀	TITLE:	MX501189 180° SMT Wafer