

RoHS

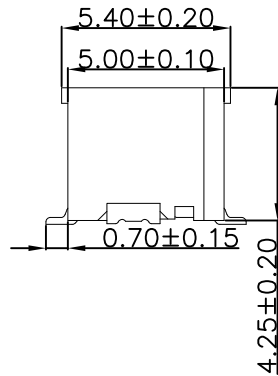
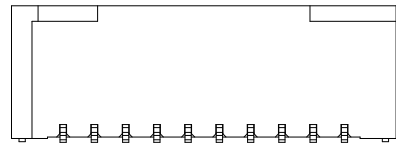
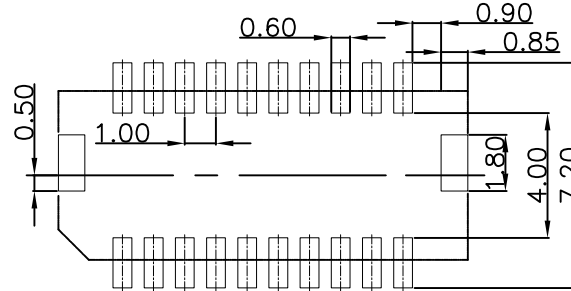
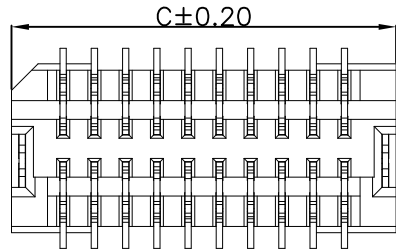
Recommended P.C.B Layout
General Tolerance±0.05

Specification:

- Current Rating: 1A AC/DC
- Voltage Rating: 50V AC/DC
- Insulation Resistance: 100MΩ Min
- Withstanding Voltage: 500VAC(1Min)
- Contact resistance: 20mΩ(Max).
- Operation Temperature: -40°C to +85°C

Material:

- Insulator (Housing): PA9T (UL94V-0)
- Contacts:Phos.Bronze,Gold Plated
- Color: Beige



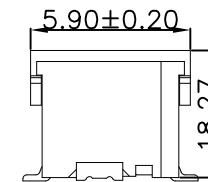
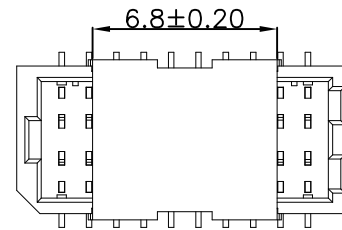
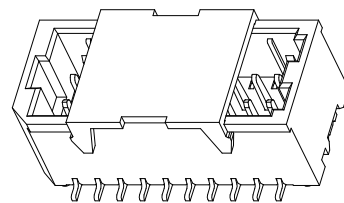
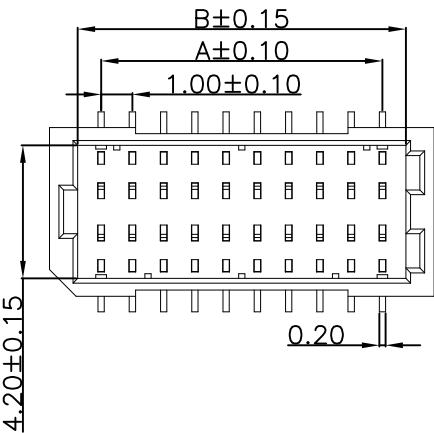
东莞市晟凯达电子科技有限公司
工程专用章

Ordering Information

SCT1002WVS - 2x ** E 1 BE 101

No.of Pins See Table Insulation E=PA9T Package 1=Tape&Reel Color BE=Beige

受控



2x25	24.00	25.50	27.30
2x20	19.00	20.50	22.30
2x15	14.00	15.50	17.30
2x10	9.00	10.50	12.30
2x08	7.00	8.50	10.30
2x06	5.00	6.50	8.30
Poles	A	B	C
	Dimensions		

					OPERATION	DRAW	Peng	2021.07.10	SCALE	-	 SCONDAR ELECTRONIC LIMITED	
					X.X	±0.35			UNIT	mm		
A1	2021.07.10	Changed from SCT1002WV-S-2XXP to SCT1002WVS-2XXE1BE101			X.XX	±0.25			SIZE	A4		
AO	2006.05.02	NEW			X.XXX	±0.15	Lisa	2021.07.10	SHEET	1/1		
REV	DATE	MODIFICATION DESCRIPTION	CHANGE	APPROVE	Angle	± 3'	Allen	2021.07.10	PROJ.	⊕	PART NO.	SCT1002WVS-2XXE1BE101
					DIM	TOL			TITLE:		SH 1.00mm Pitch 180° SMT Wafer Connector	